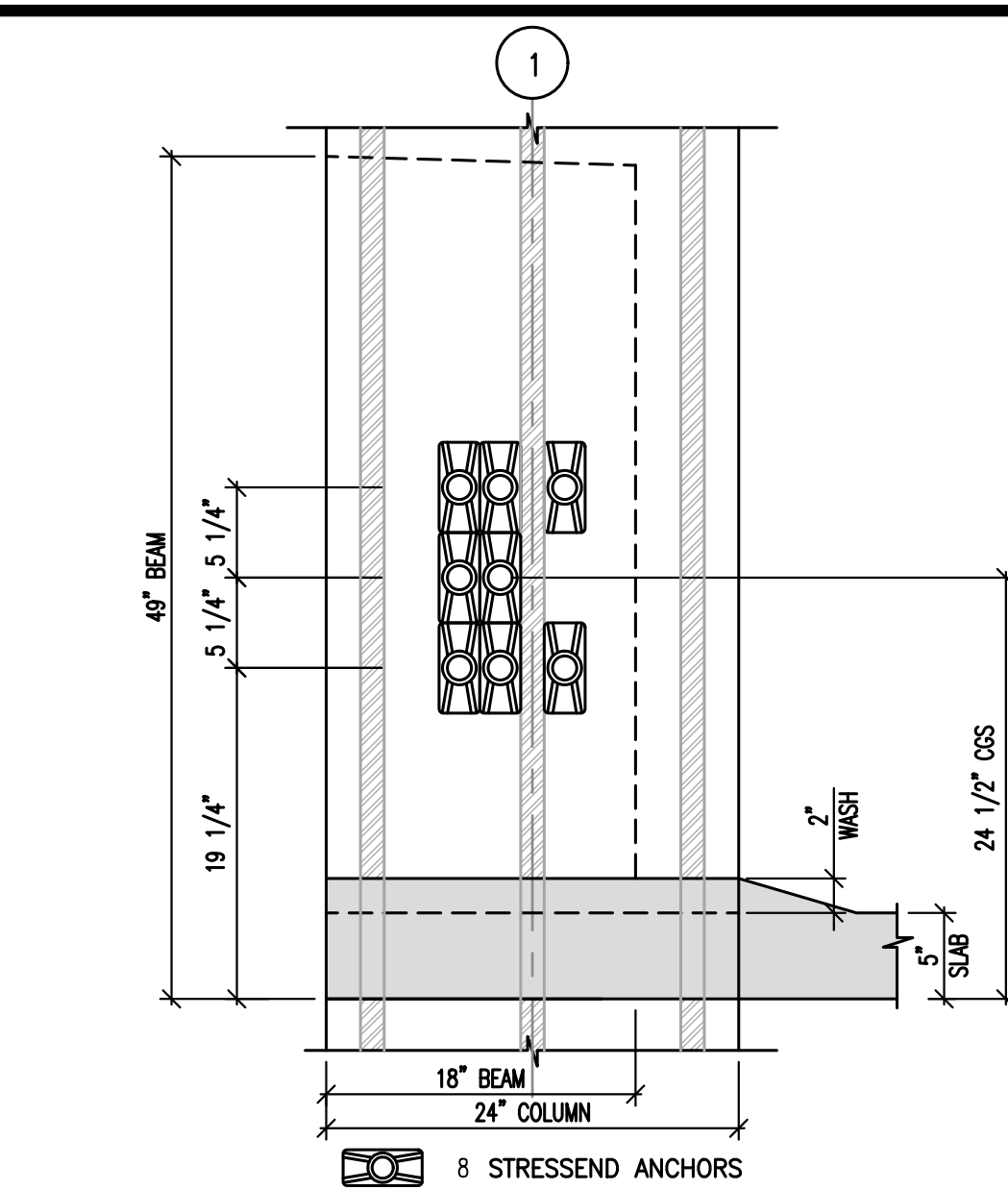
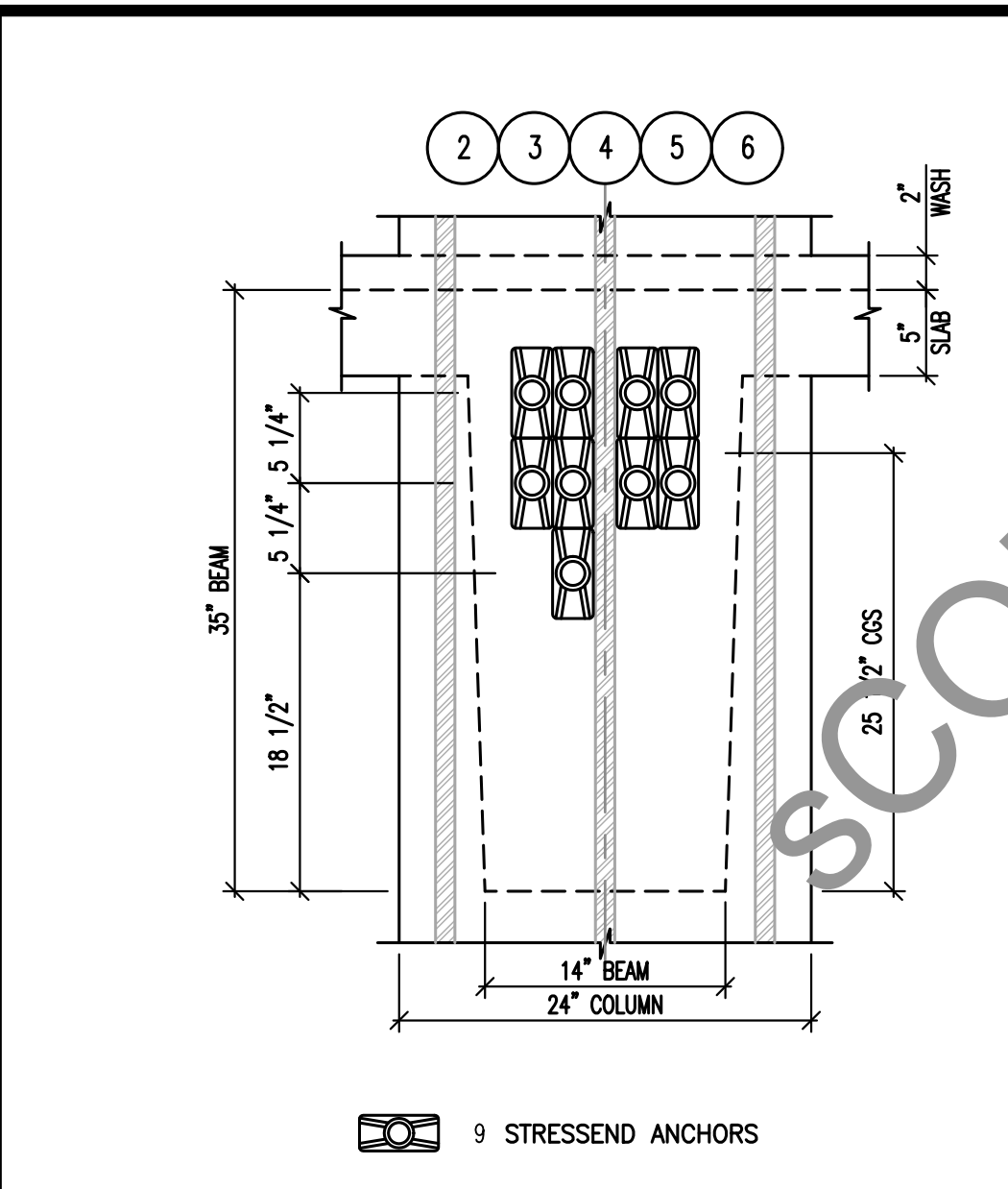


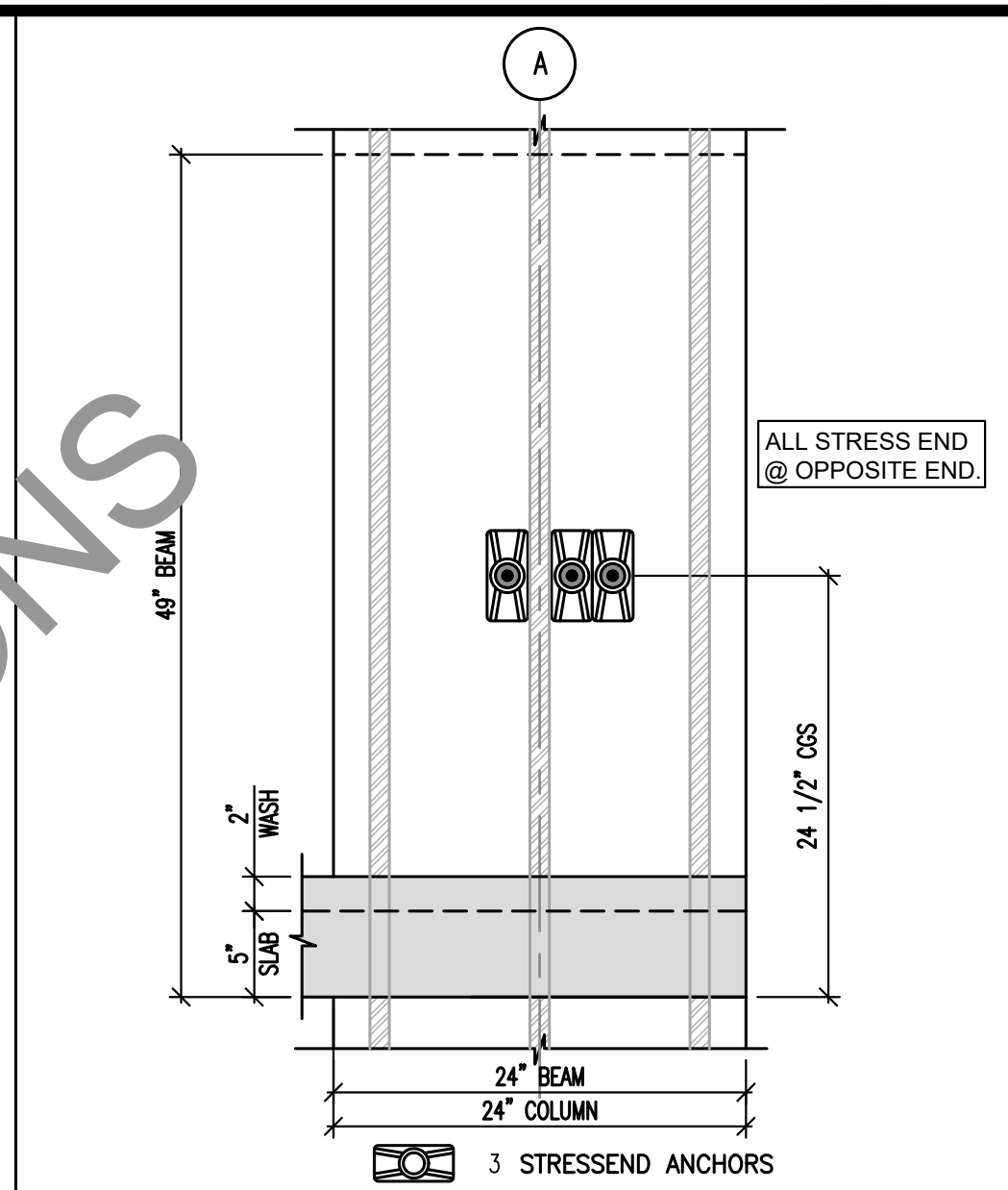
1 BEAM PROFILE FOR UPRTURN BM @ GRID 1



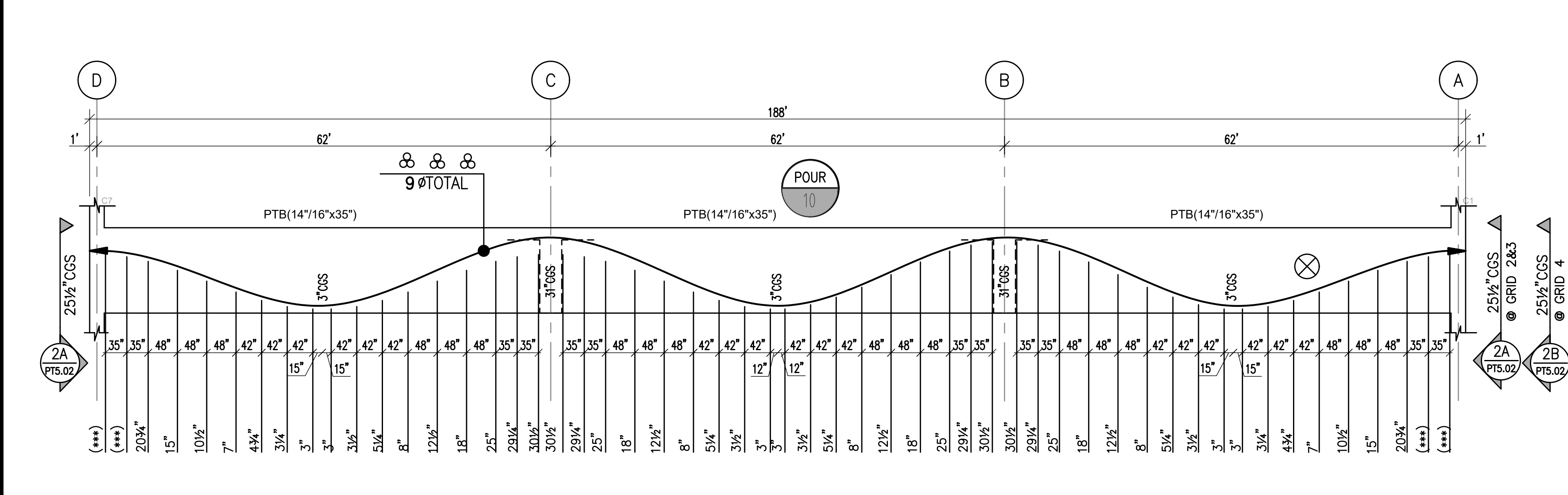
1A BEAM END DETAIL



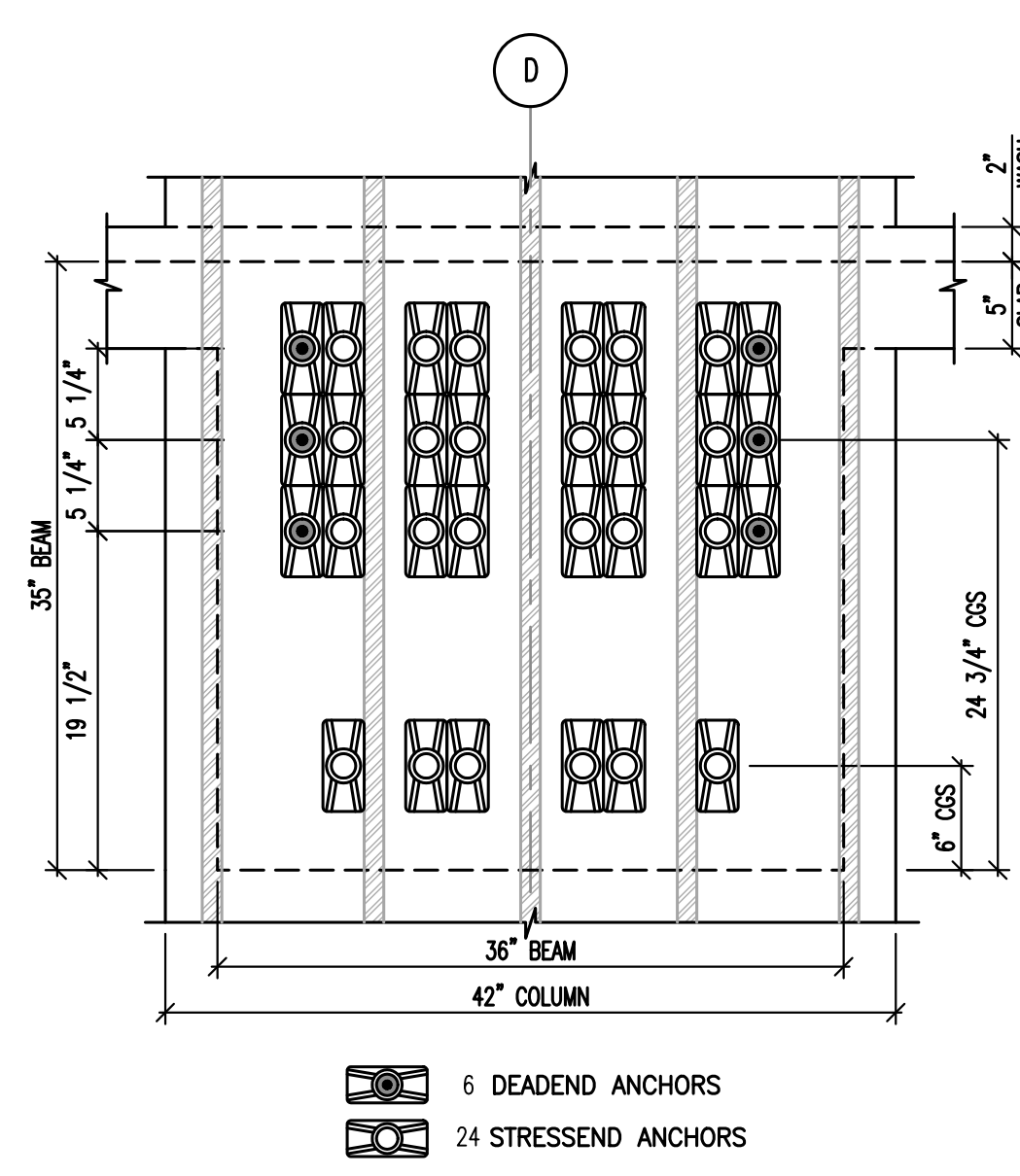
2A BEAM END DETAIL



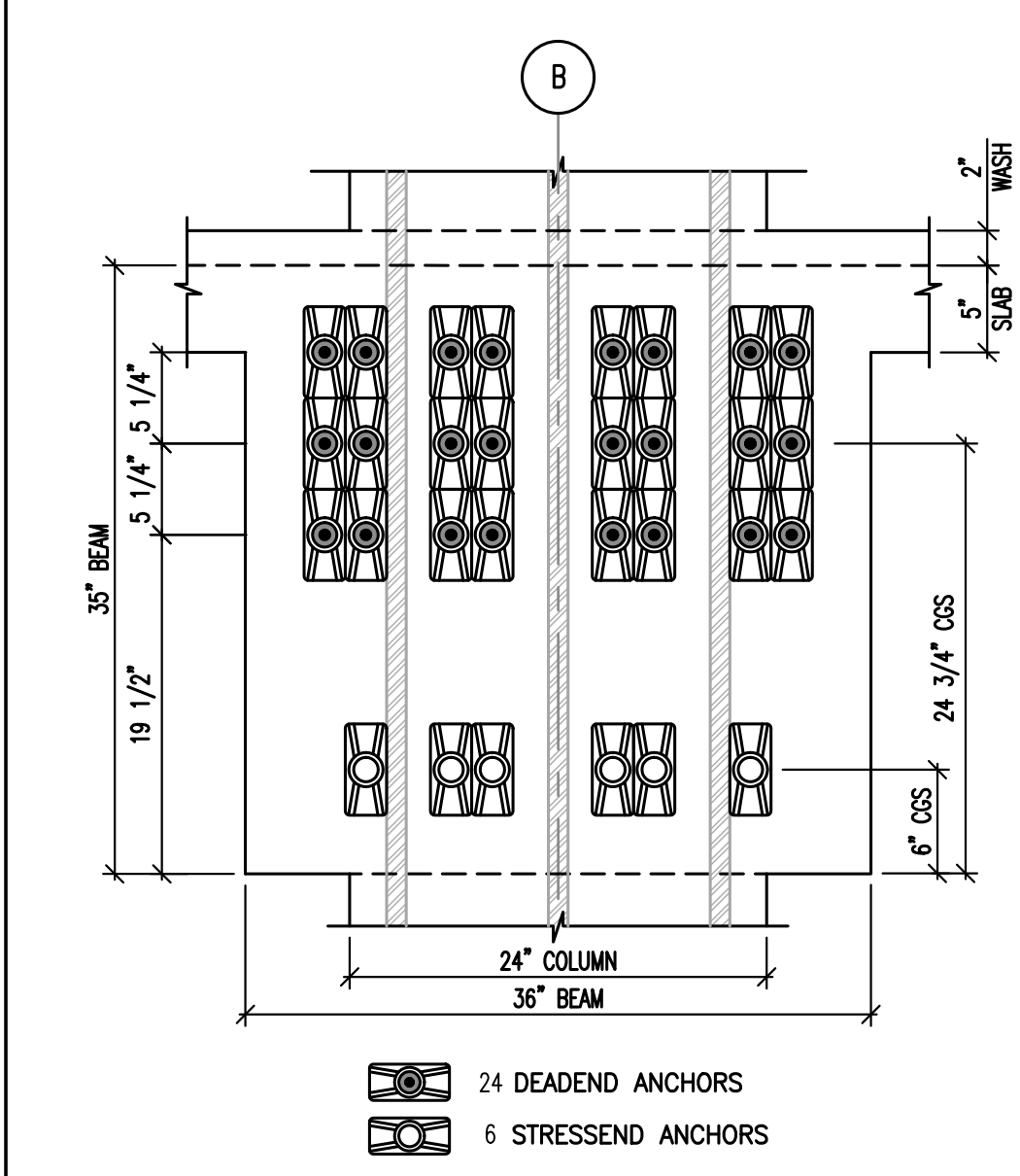
4A BEAM END DETAIL



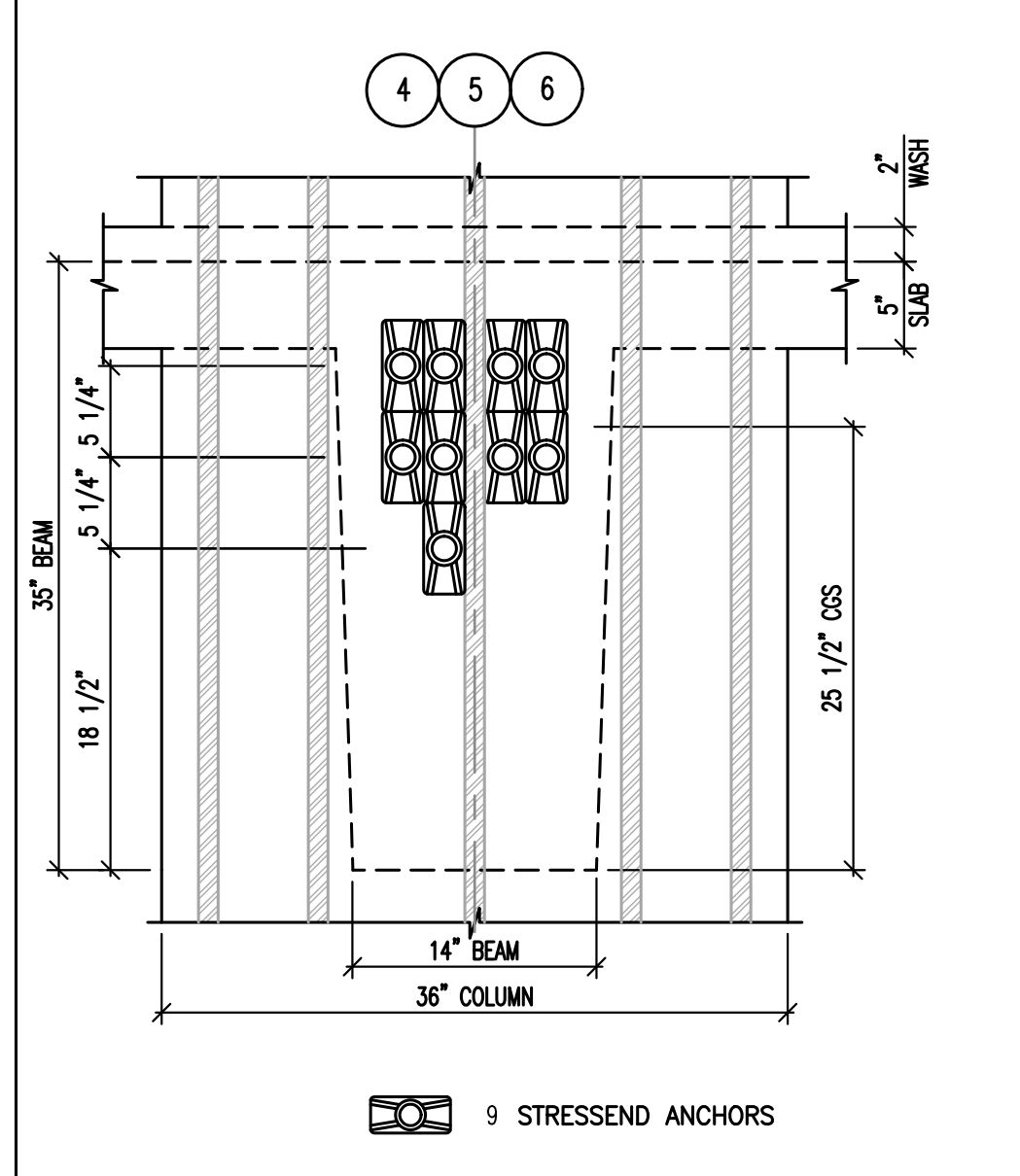
2 BEAM PROFILE FOR PTB @ GRIDS 2,3 & 4 (3 TIMES)



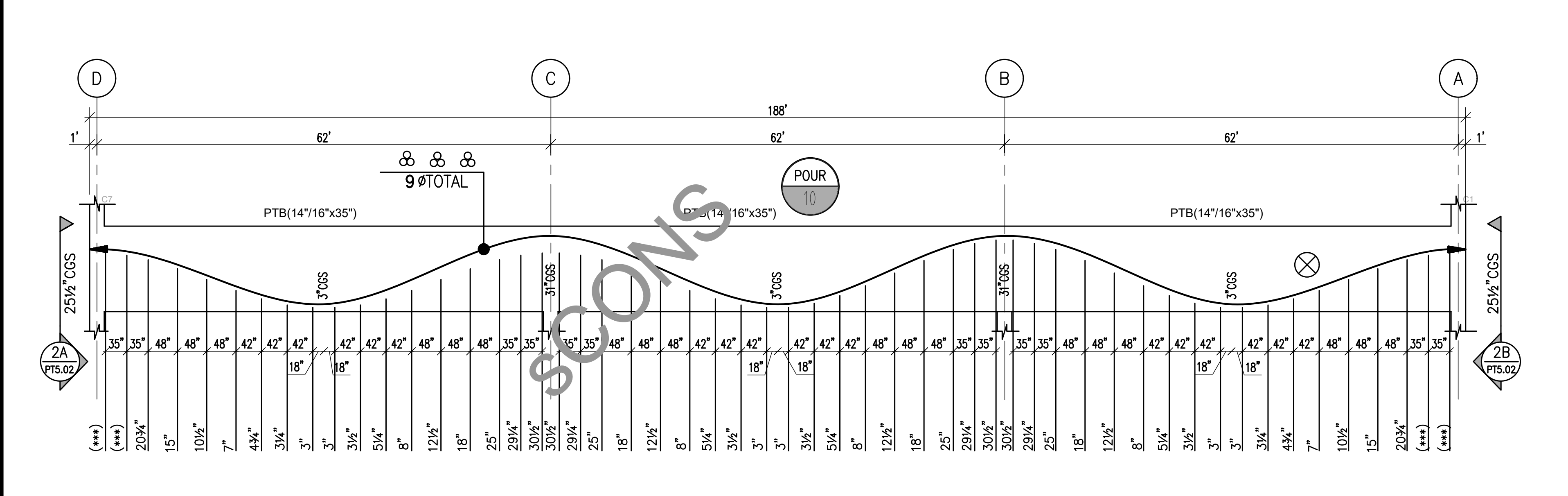
5A BEAM END DETAIL



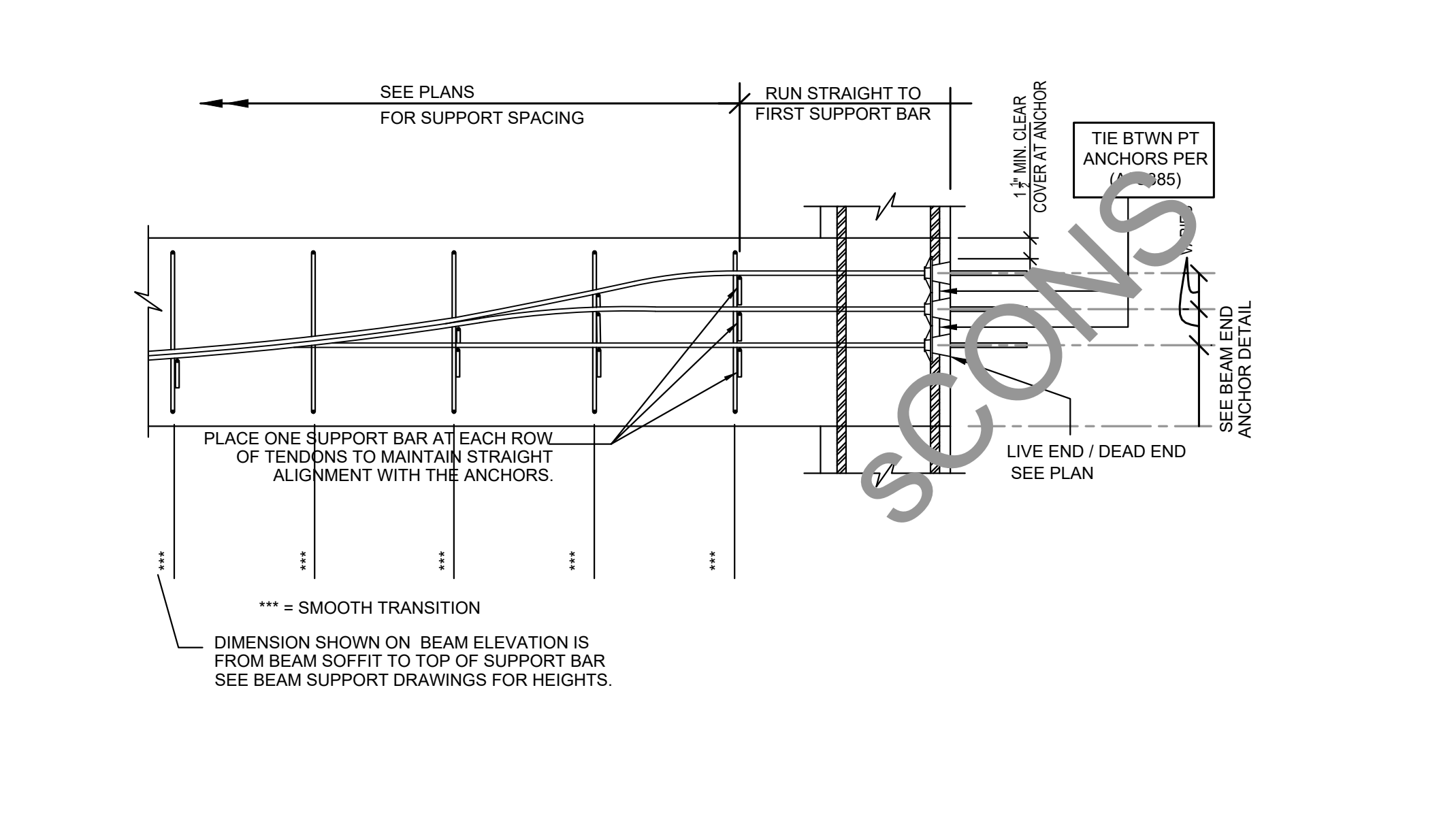
5B BEAM END DETAIL



2B BEAM END DETAIL



3 BEAM PROFILE FOR PTB @ GRIDS 5 & 6 (2 TIMES)

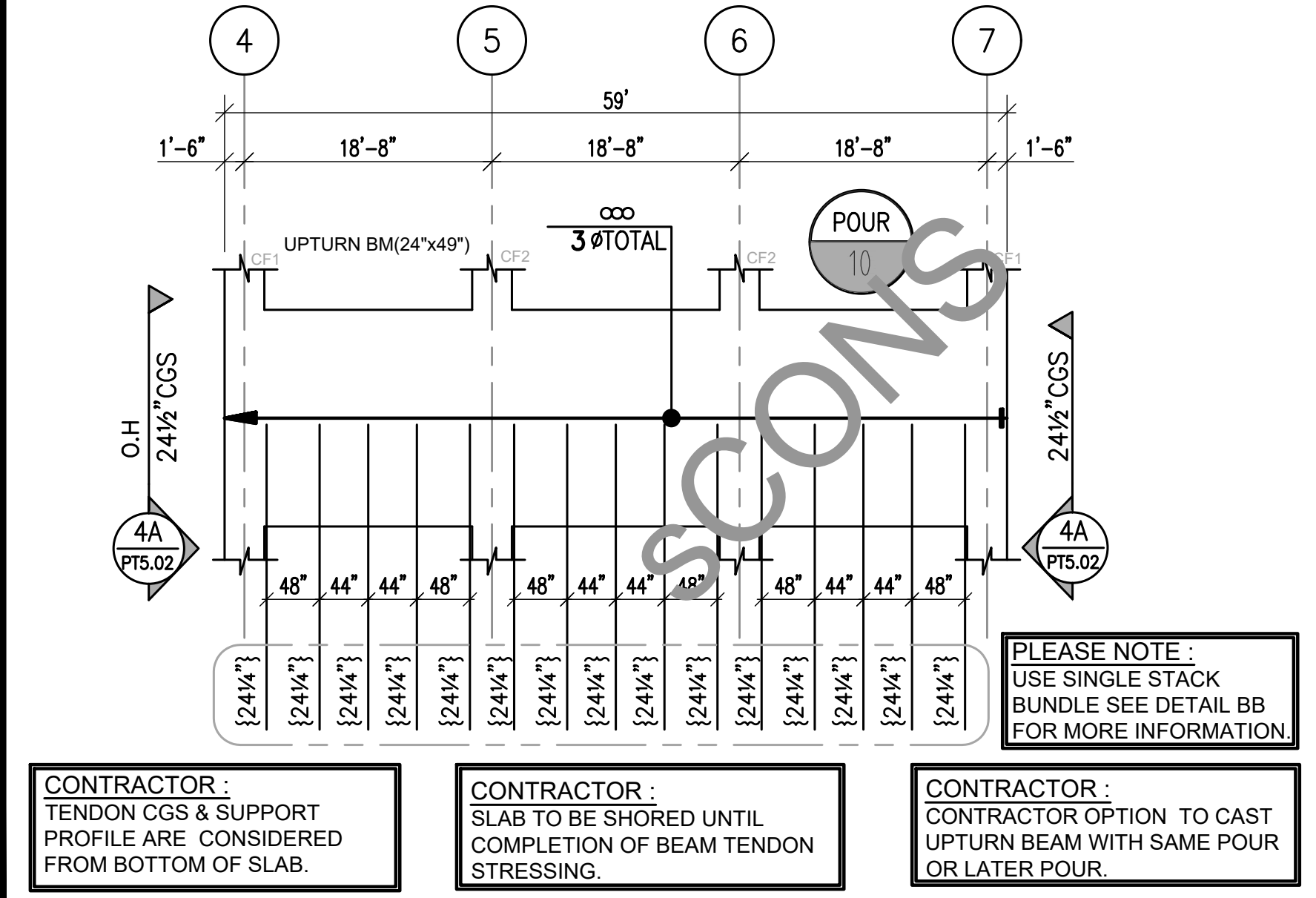


CC TYPICAL DETAIL ANCHOR PLACEMENT AT BEAM ENDS

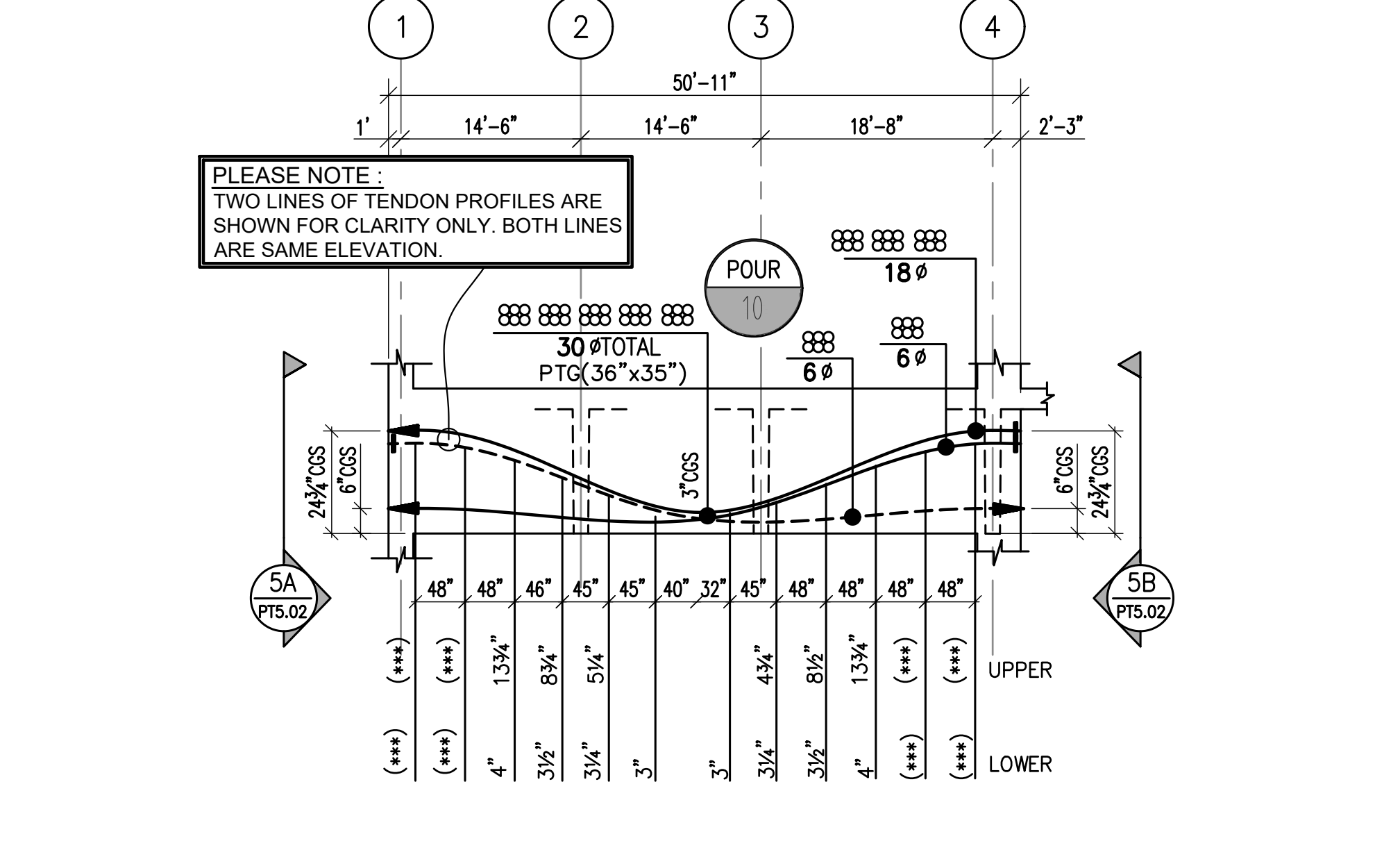
**BEAM SUPPORT BAR LEGEND**

VARIES (SEE SCHEDULE)

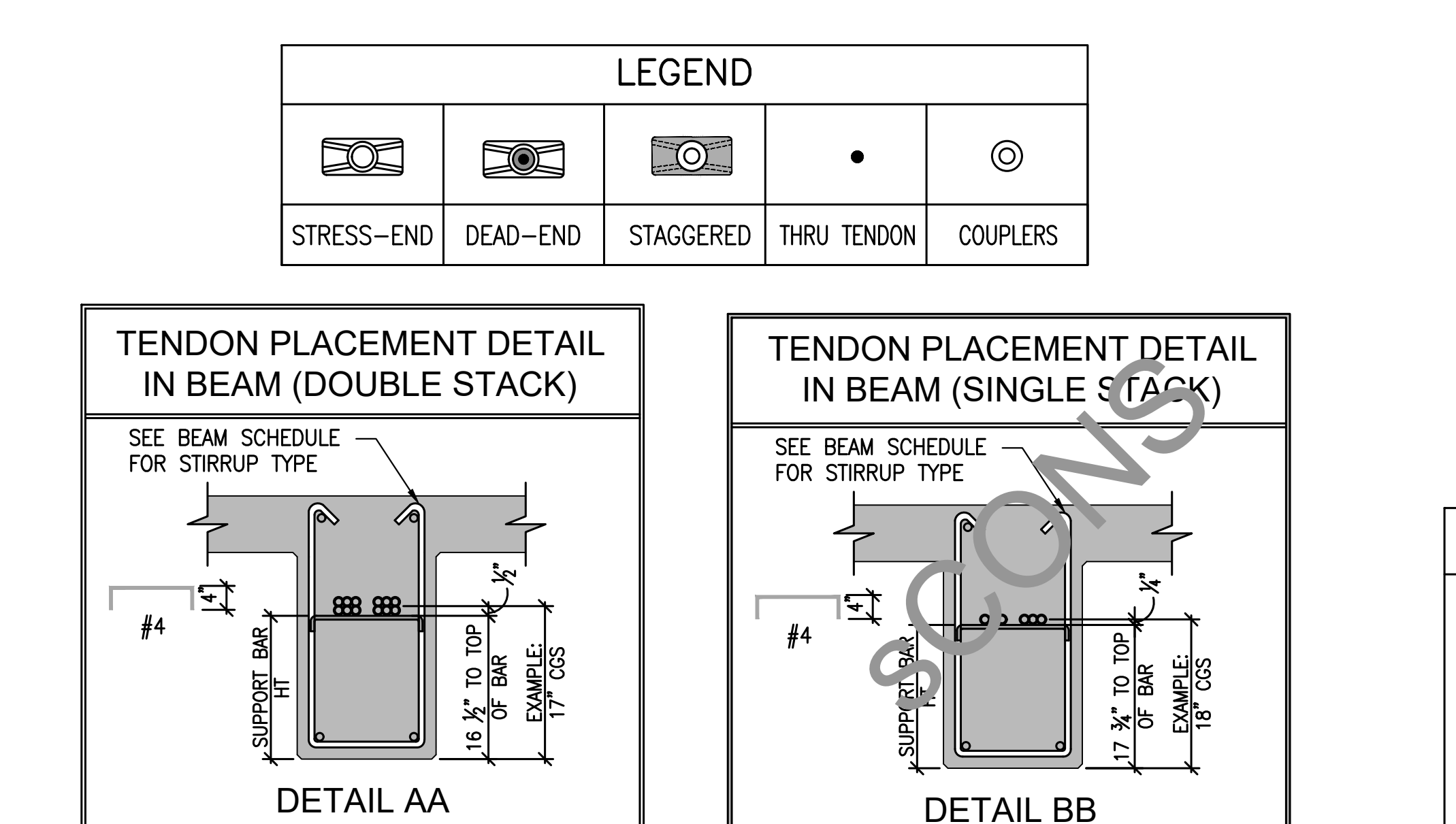
#4 TYP. (UNO)



4 BEAM PROFILE FOR UPRTURN BM @ GRID A



5 BEAM PROFILE FOR PTG @ GRIDS B & C (2 TIMES)

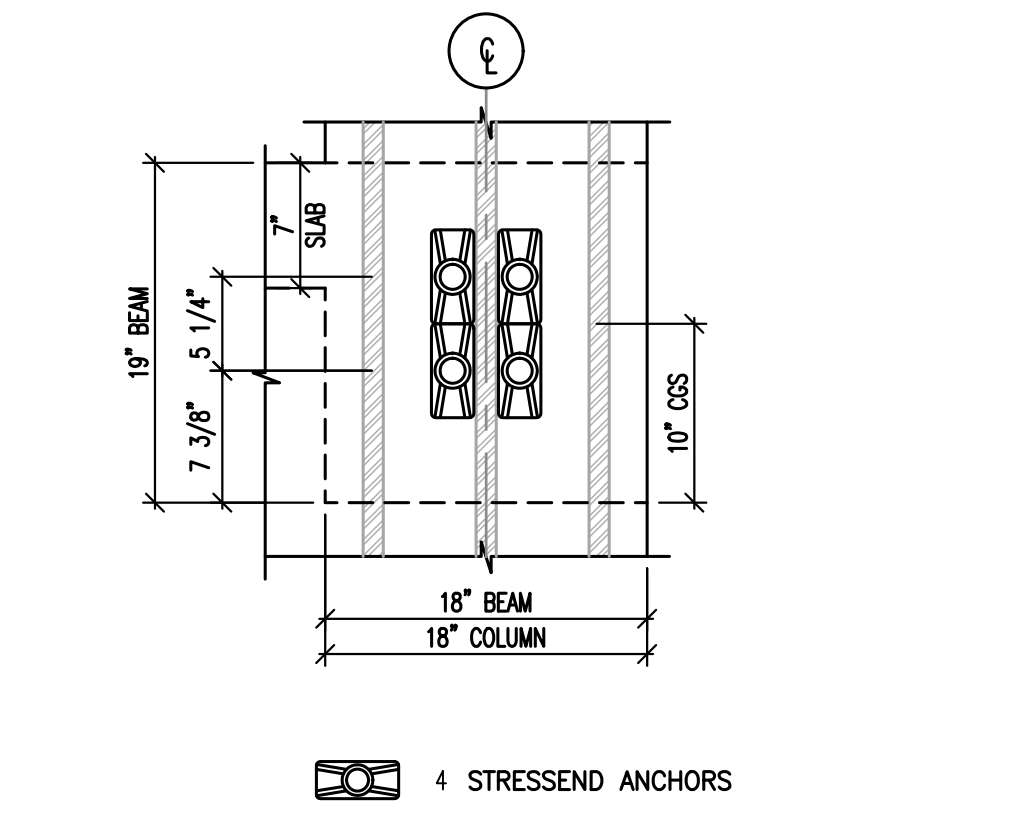
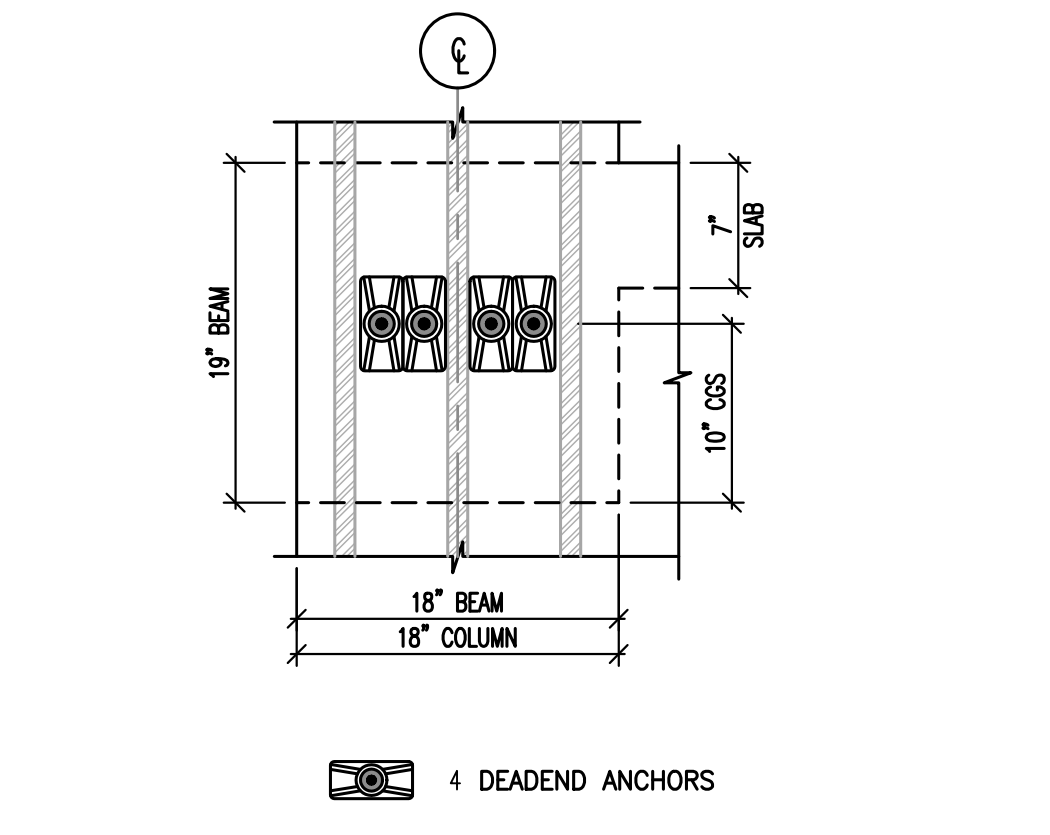
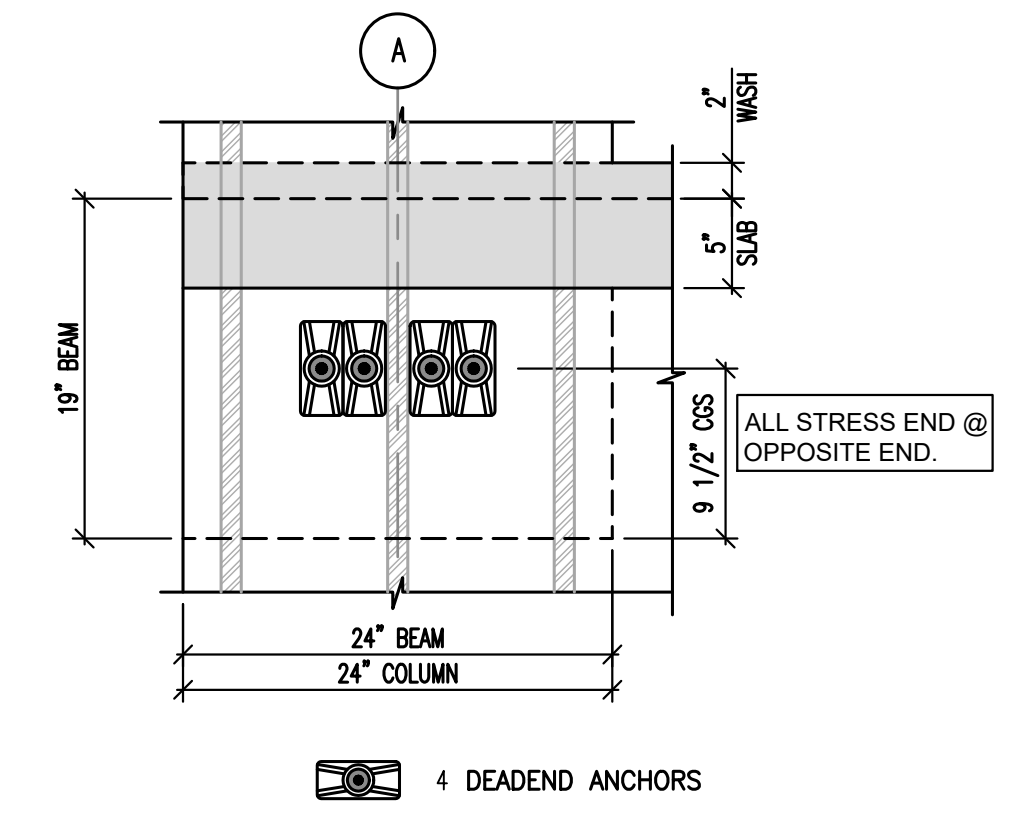
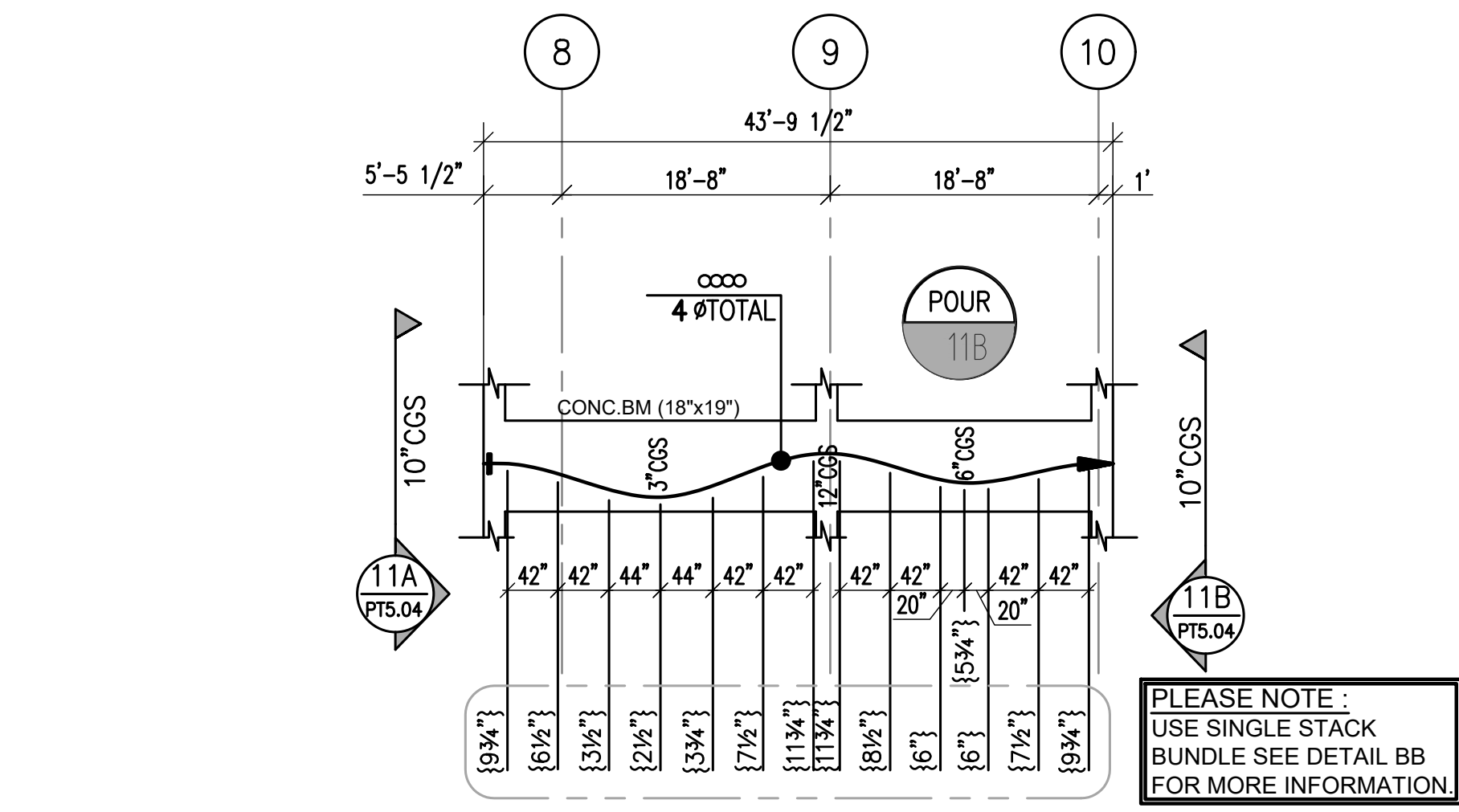
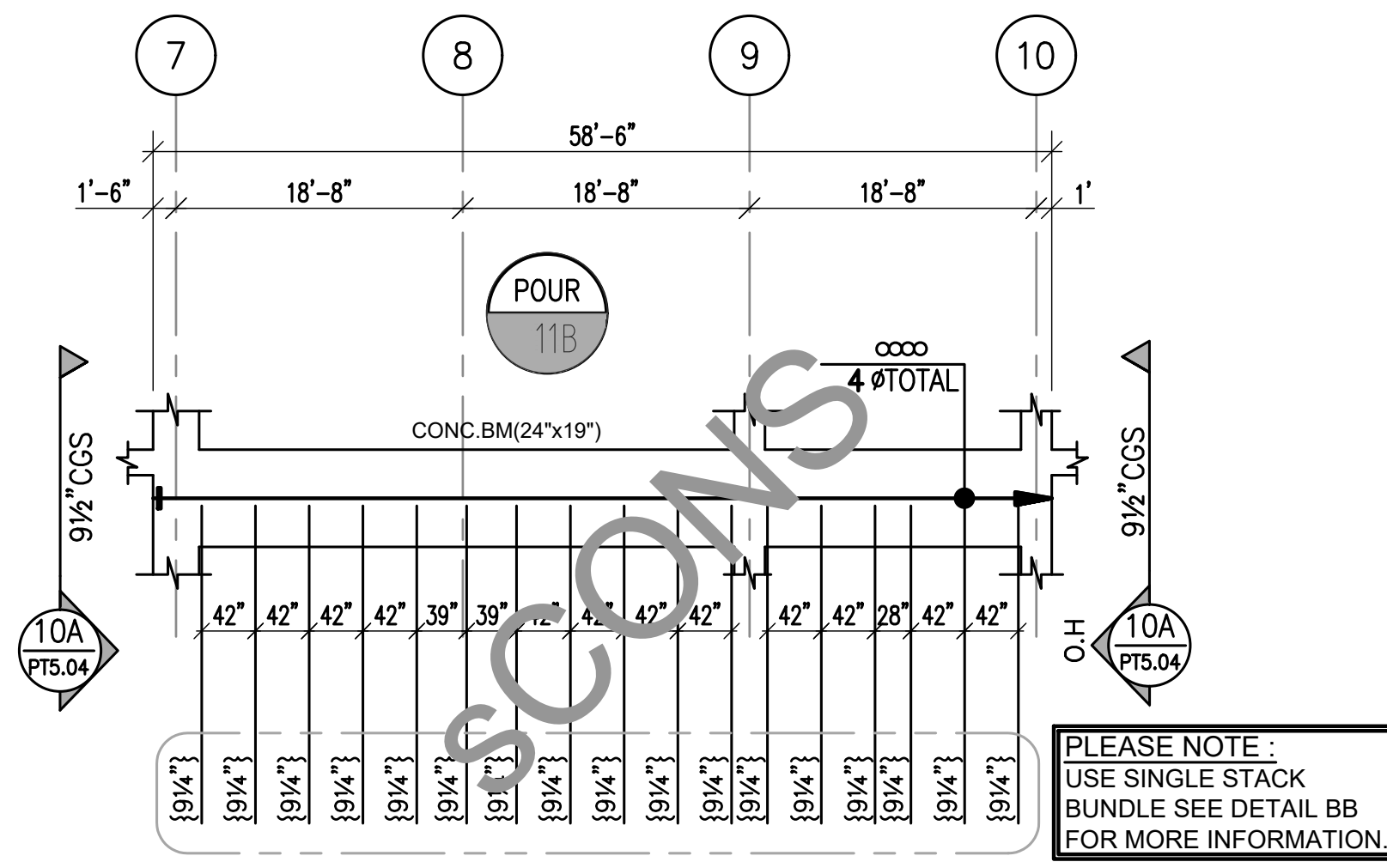


- PLEASE NOTE:**
01. FOR BEAM TENDON SCHEDULE & ELONGATION REFER PT-5.01 SHEET.
  02. FOR BEAM TENDON PLACEMENT DETAIL IN DOUBLE STACK, REFER DETAIL AA/PT-5.02.
  03. FOR BEAM TENDON PLACEMENT DETAIL IN DOUBLE STACK, REFER DETAIL BB/PT-5.02.
  04. FOR BEAM BACK BARS DETAIL REFER DETAIL CC/PT-5.02.

- BEAM TENDON SUPPORT NOTES**
1. REFER TO SHEET PT-1.00 & PT-1.01 FOR ALL GENERAL NOTES, DETAILS AND PROCEDURES.
  2. ALL BUNDLES OF TENDONS ARE TO BE TIED SECURELY TO THE SUPPORT BARS IN THE BUNDLING PATTERNS SHOWN.
  3. USE BEAM STIRRUPS SPACING FOR BEAM TENDON SUPPORT. SUPT. SPACING SHALL NOT EXCEED MORE THAN 48".
  4. (\*\*\*) SMOOTH TENDON PROFILES AT BEAM TENDON FLARING AT ENDS. SEE DETAIL CC FOR MORE INFORMATION







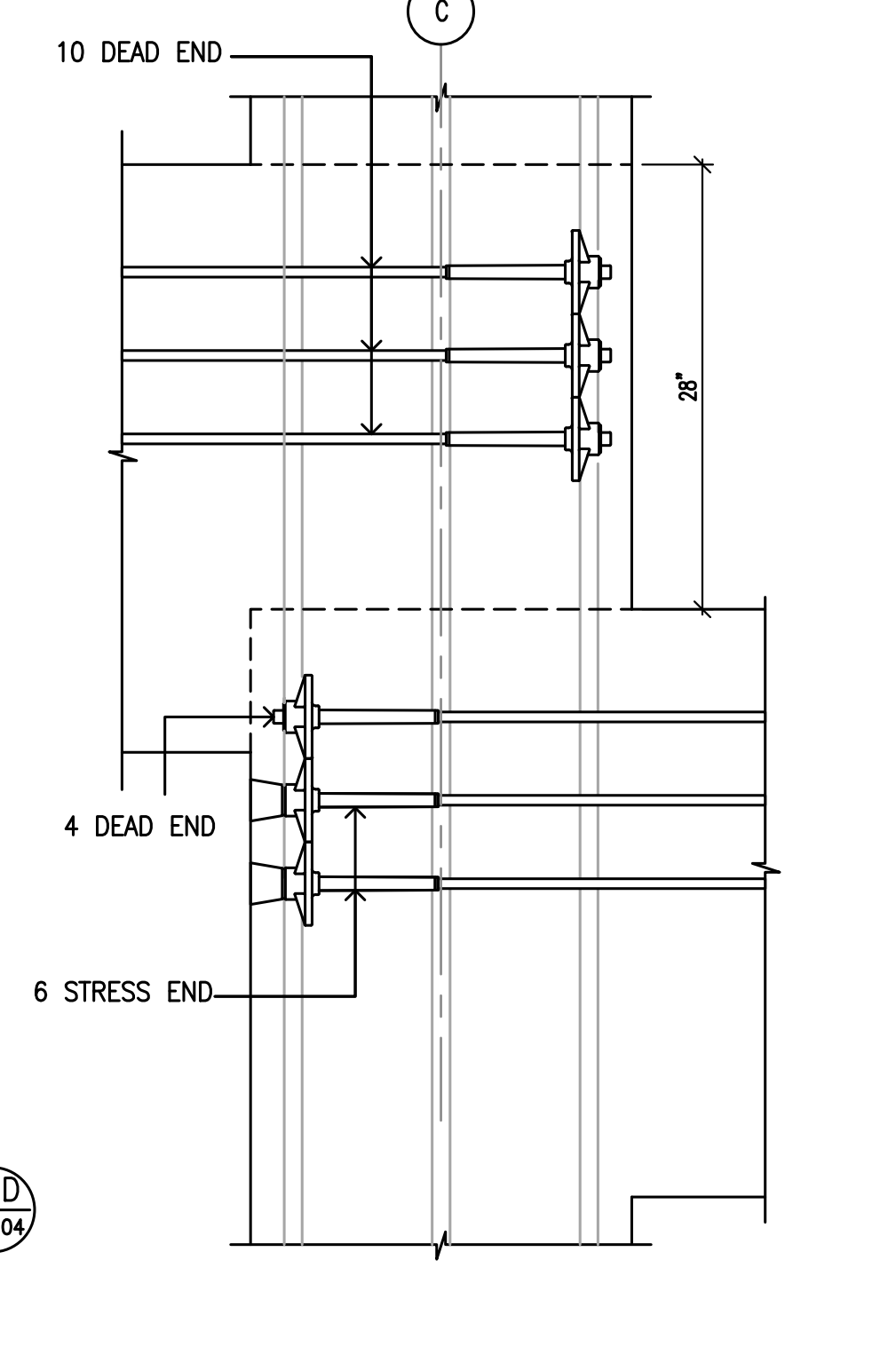
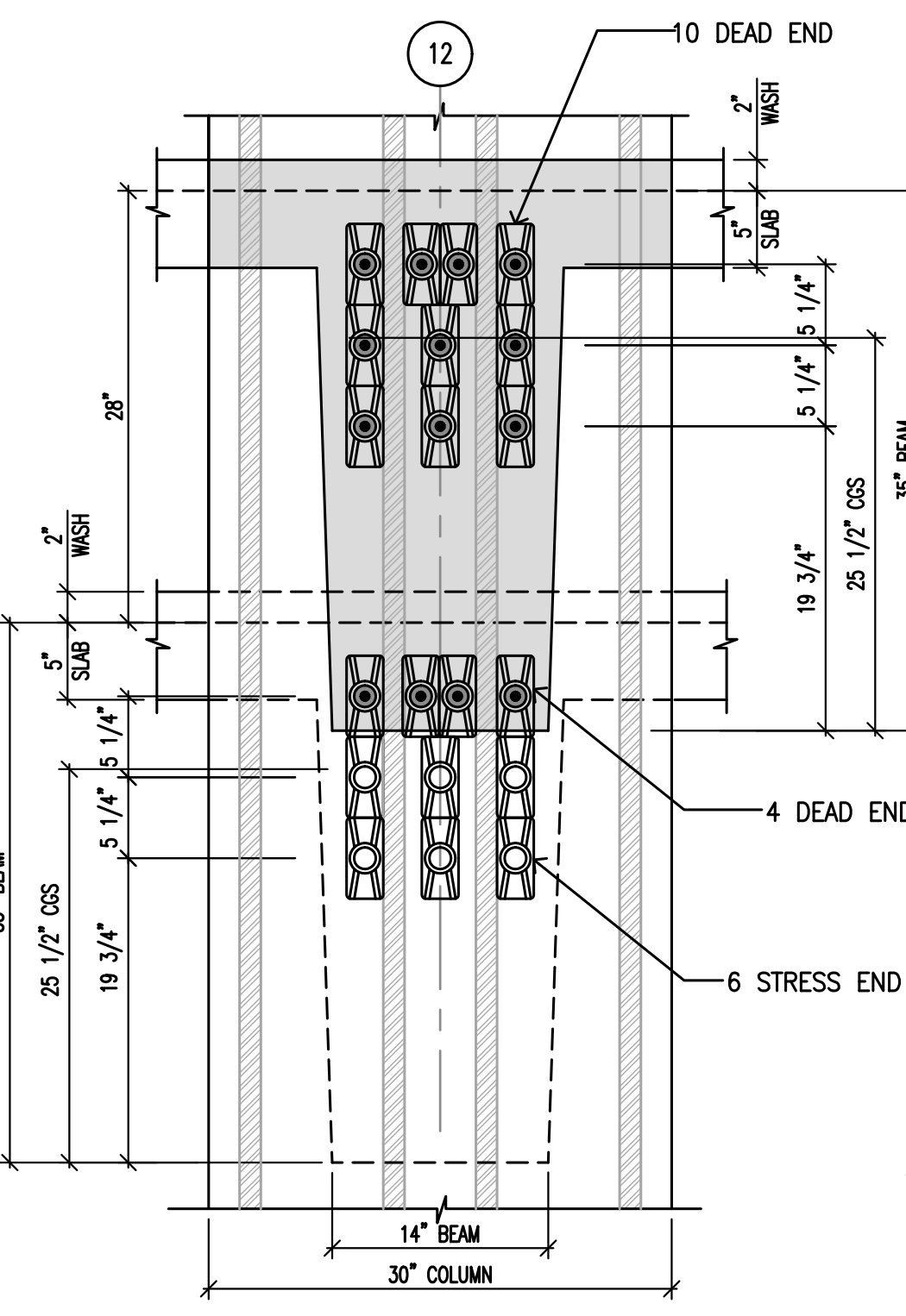
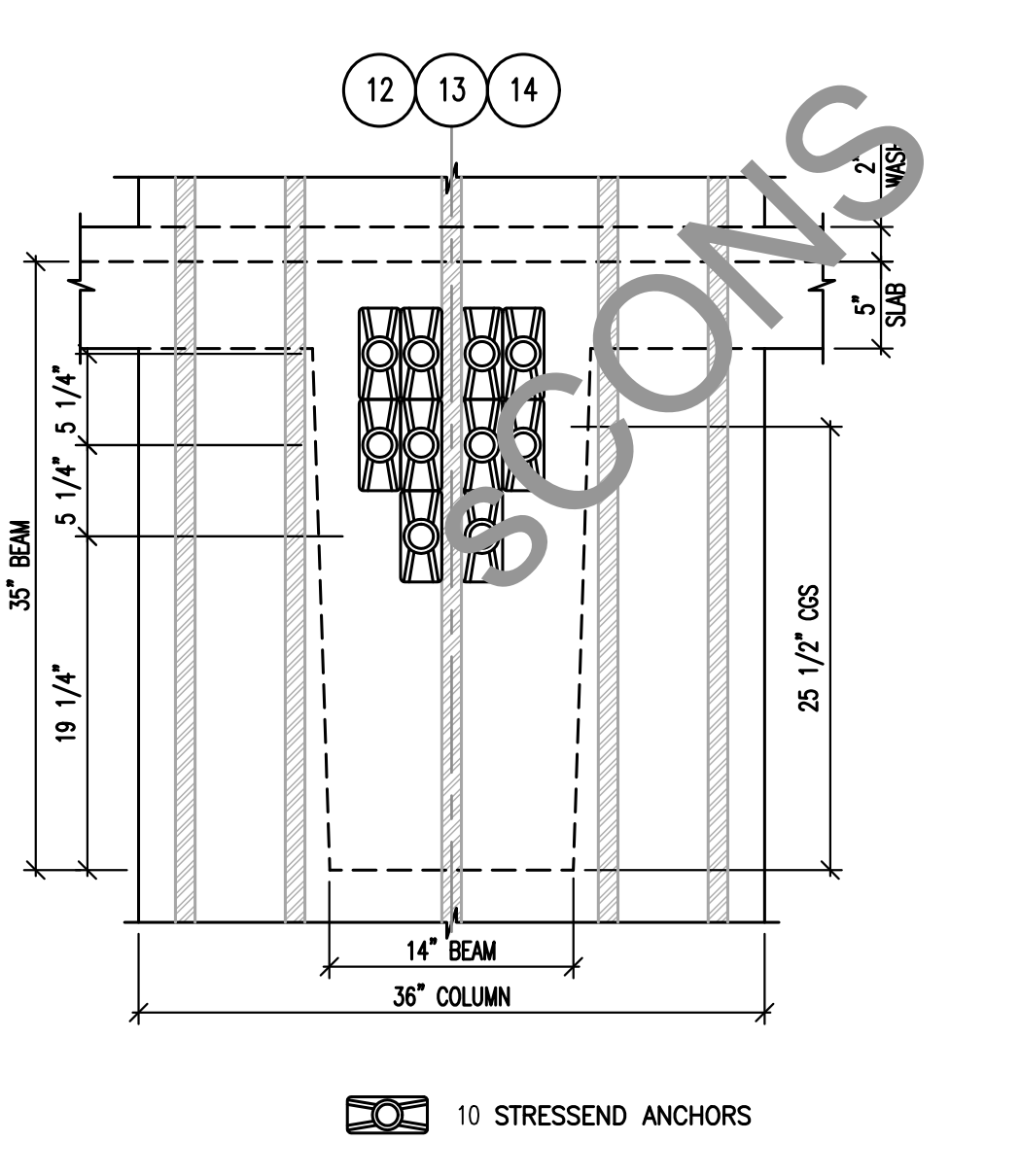
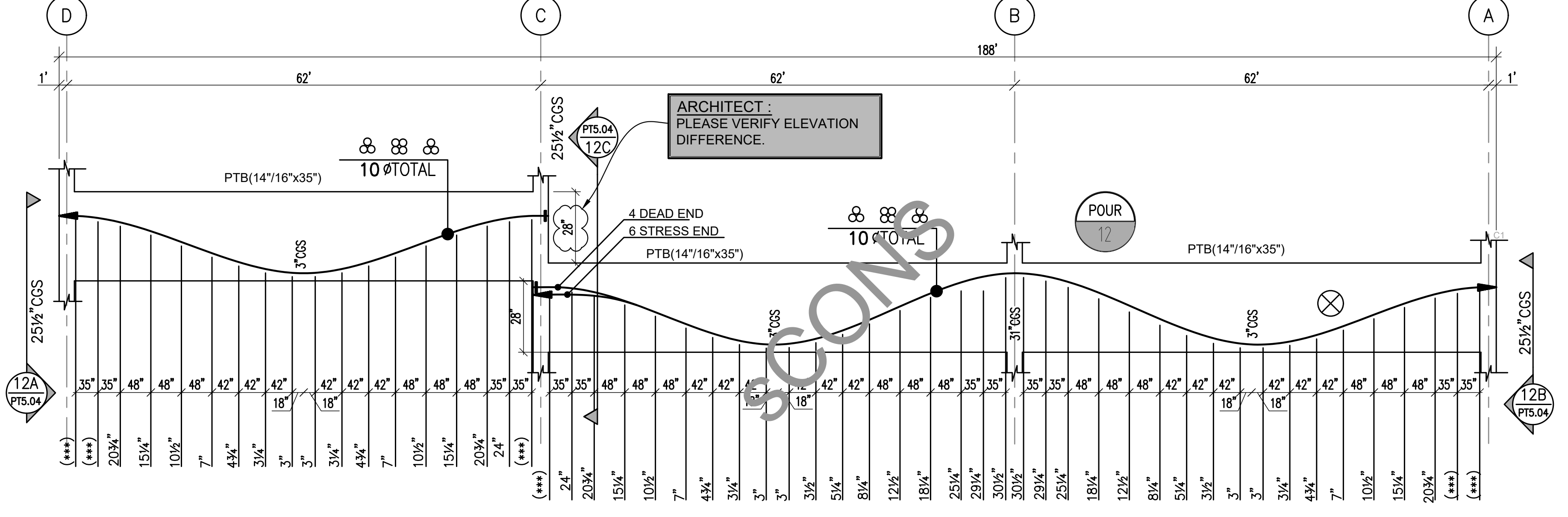
10 BEAM PROFILE FOR CONC.BM @ GRID A

11 BEAM PROFILE FOR CONC.BM ABOVE GRID A

10A BEAM END DETAIL

11A BEAM END DETAIL

11B BEAM END DETAIL

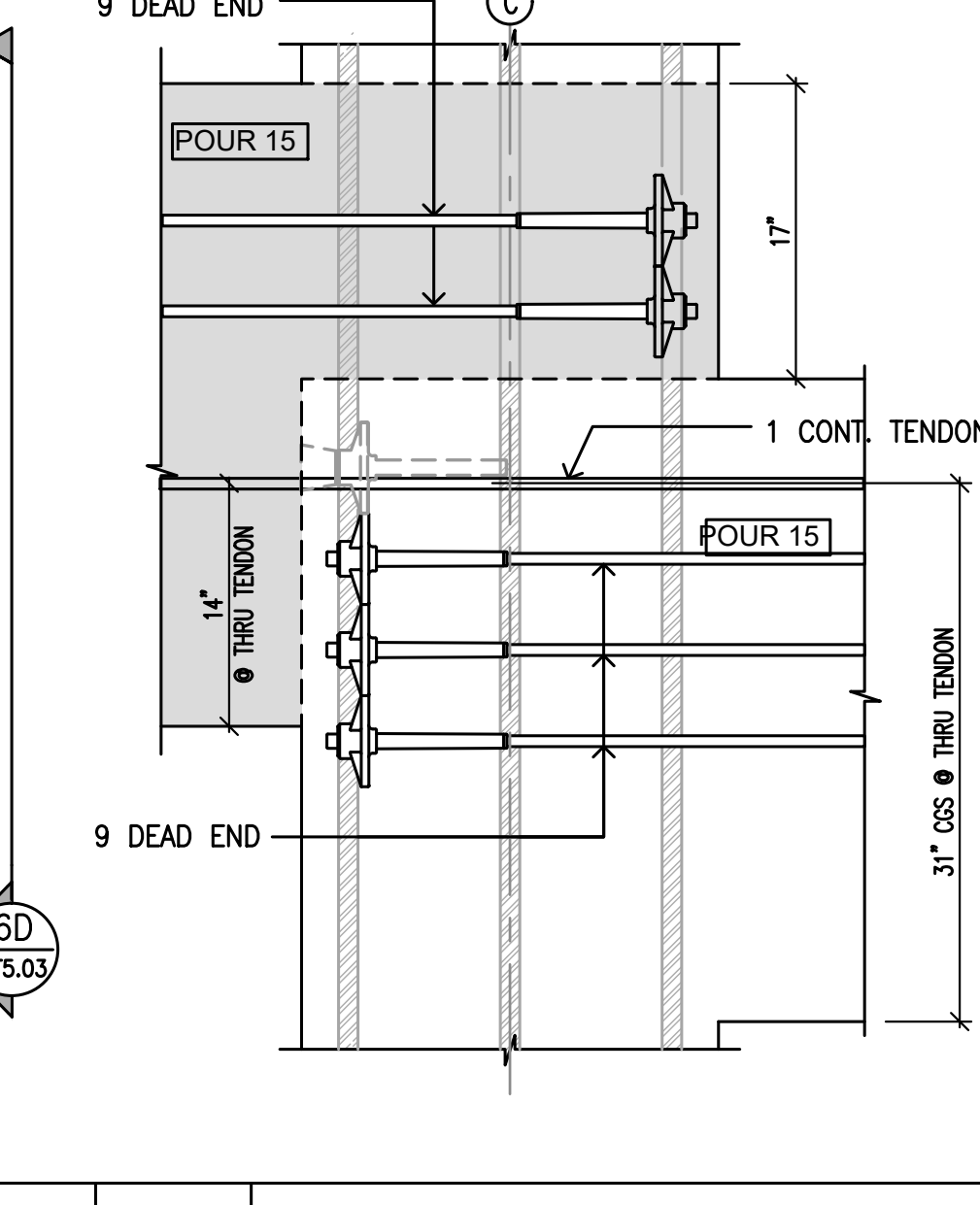
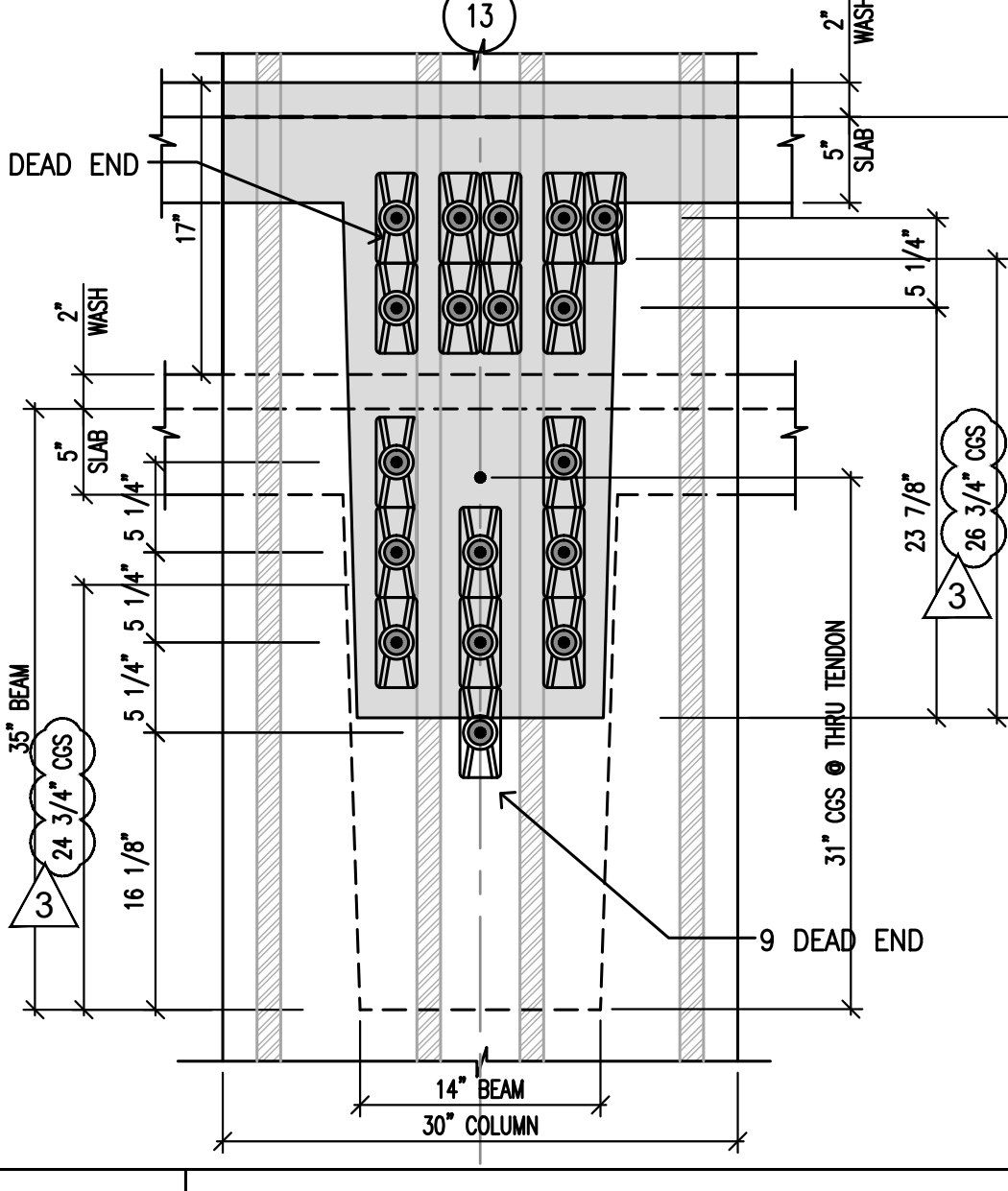
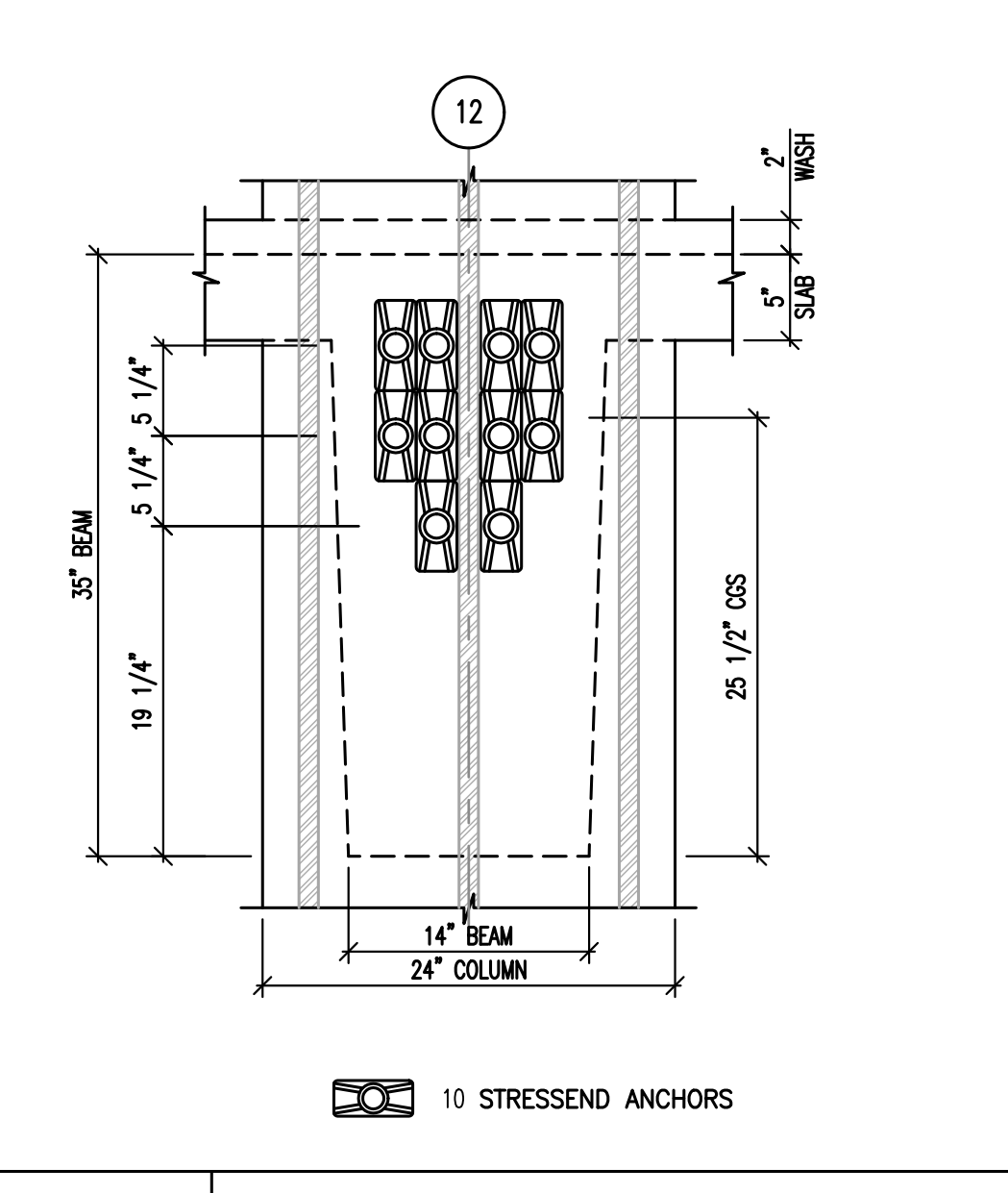
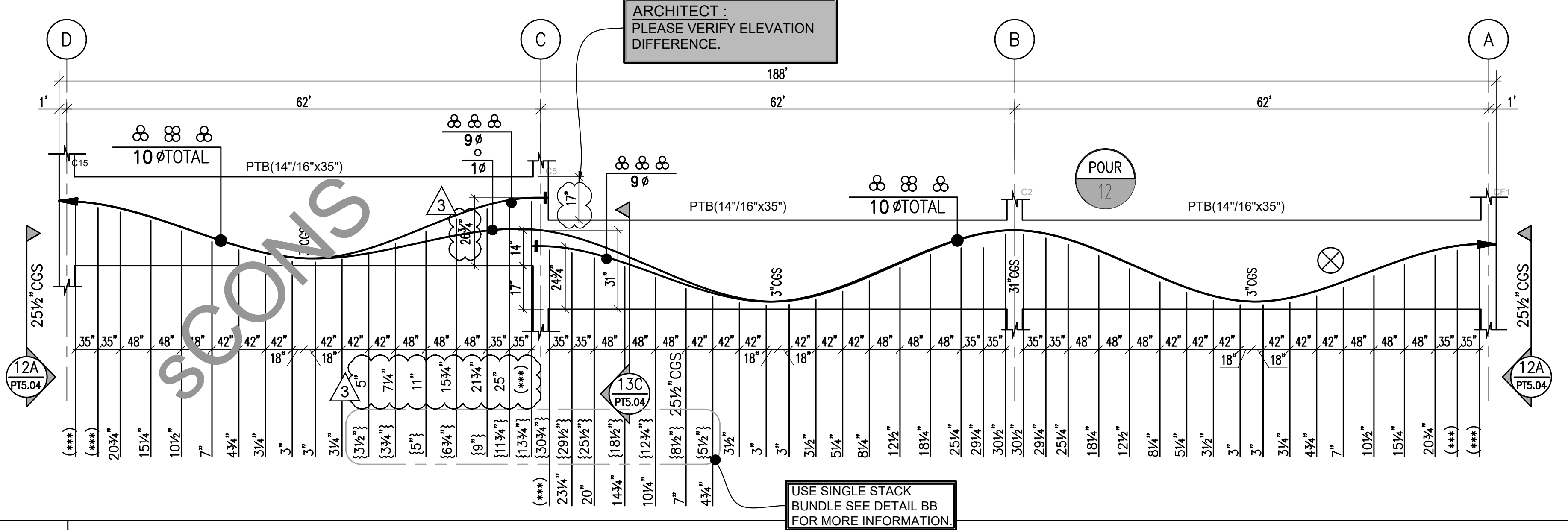


12 BEAM PROFILE FOR PTB @ GRID 12

12A BEAM END DETAIL

12C BEAM END DETAIL

12D BEAM SIDE VIEW

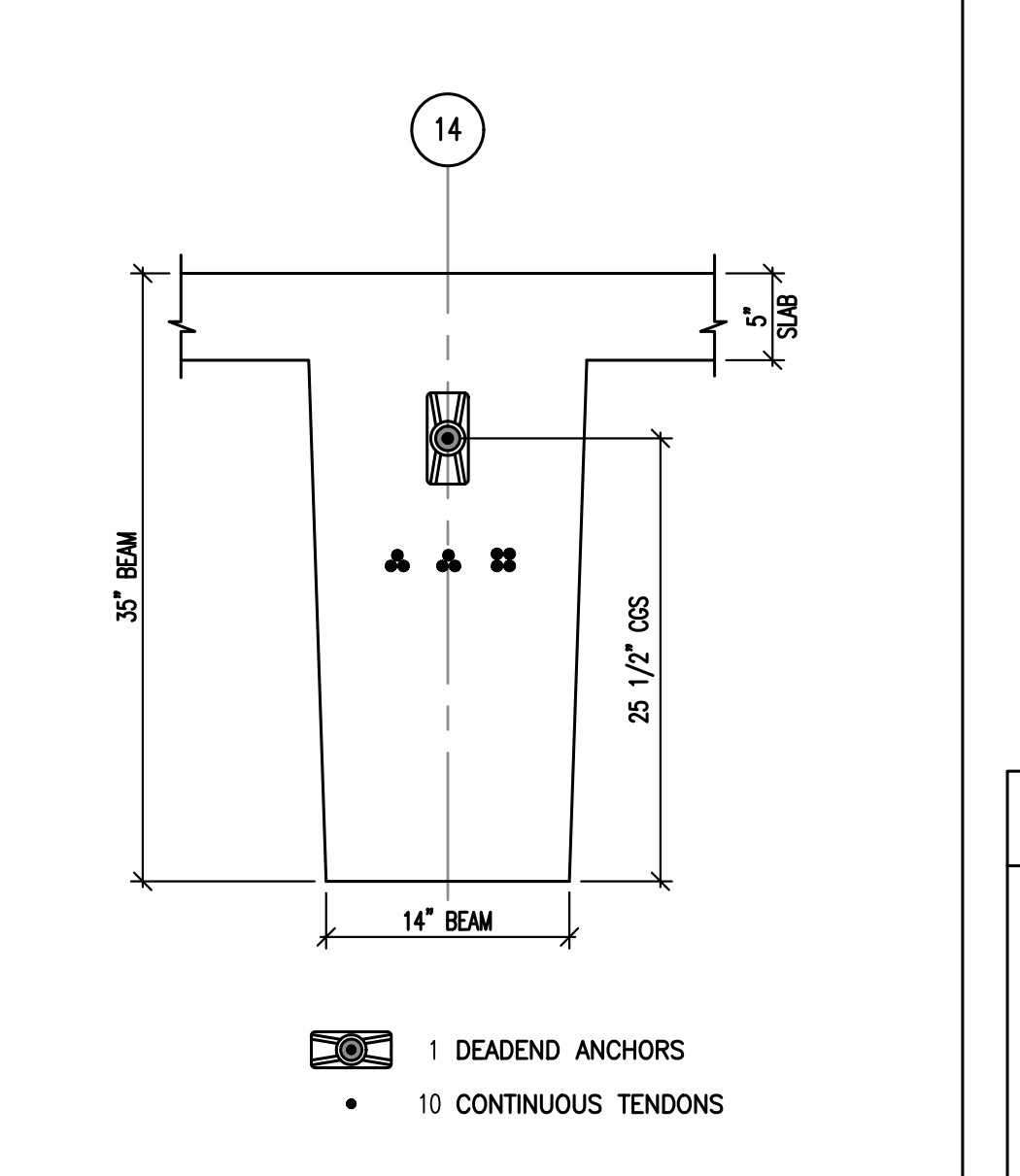
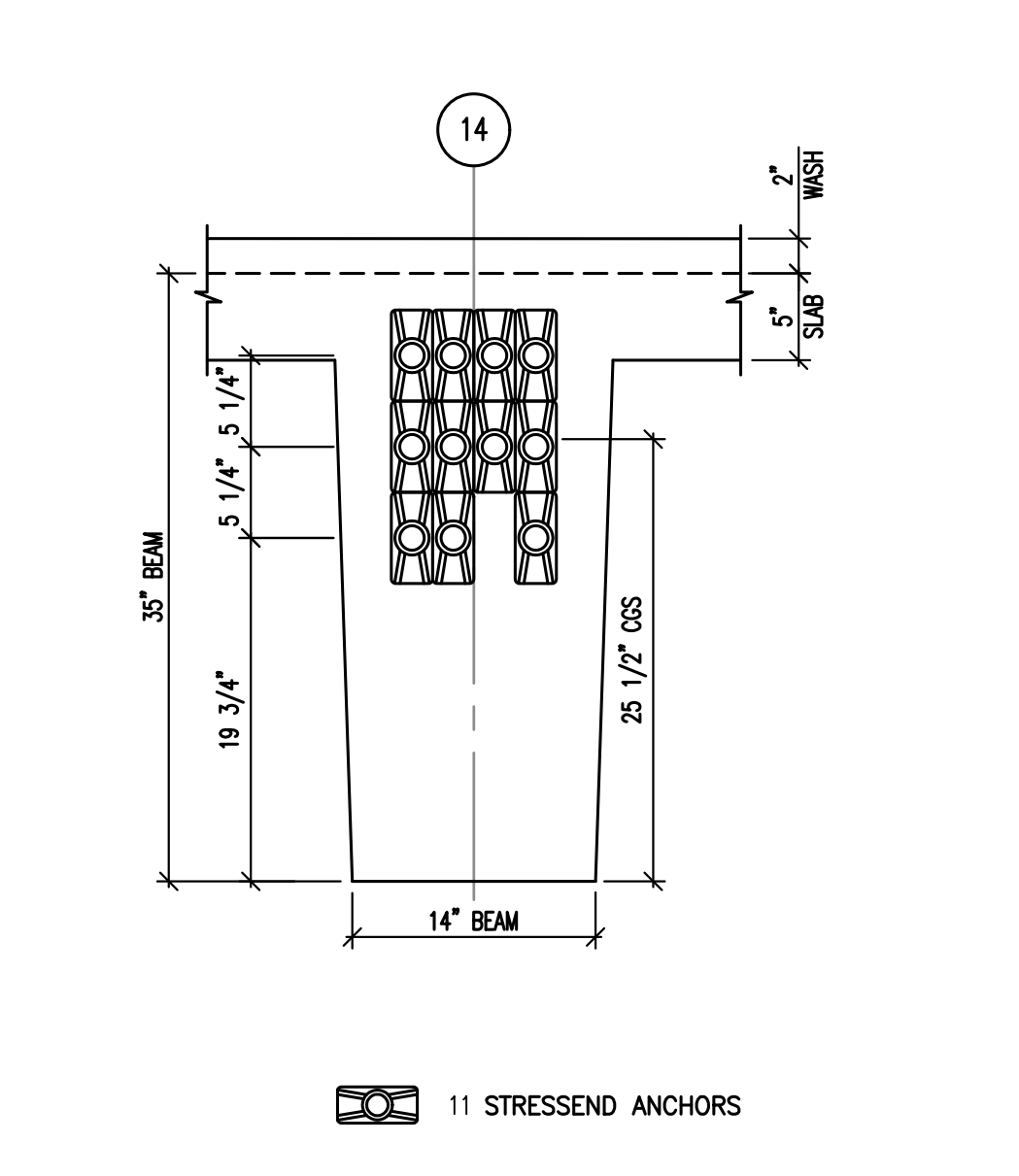
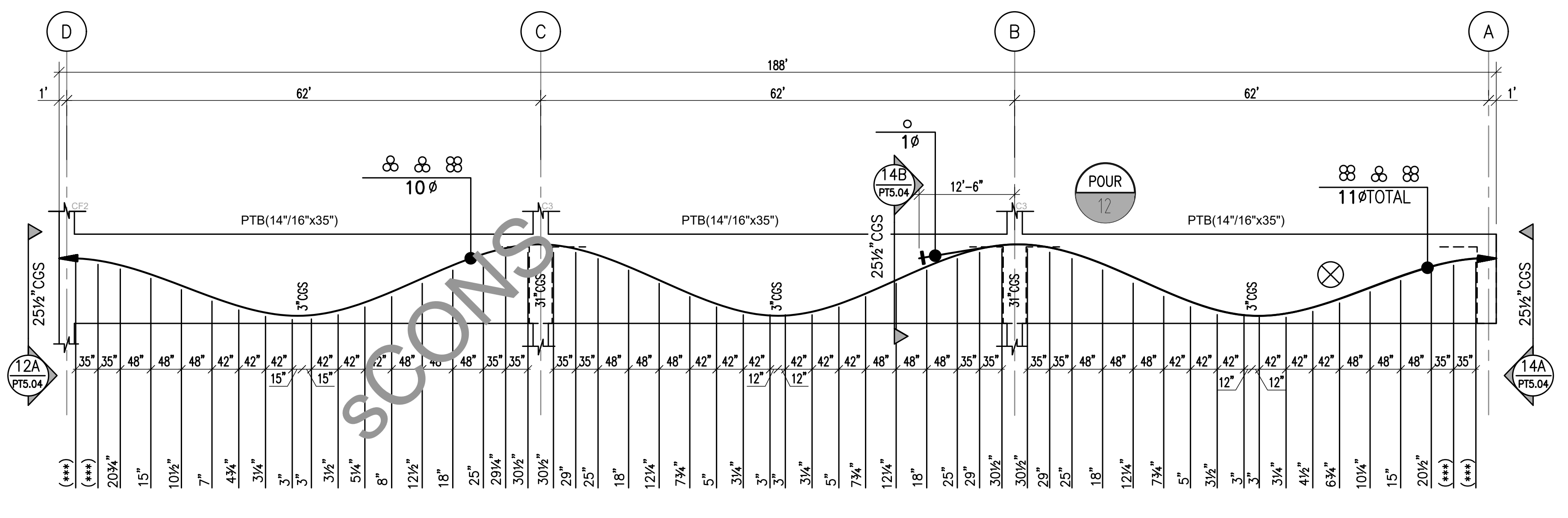


13 BEAM PROFILE FOR PTB @ GRID 13

12B BEAM END DETAIL

13C BEAM END DETAIL

13D BEAM SIDE VIEW



**PLEASE NOTE :**

01. FOR BEAM TENDON SCHEDULE & ELONGATION REFER PT-5.01 SHEET.
02. FOR BEAM TENDON PLACEMENT DETAIL IN DOUBLE STACK, REFER DETAIL AA/PT-5.04.
03. FOR BEAM TENDON PLACEMENT DETAIL IN DOUBLE STACK, REFER DETAIL BB/PT-5.04.
04. FOR BEAM BACK BARS DETAIL REFER DETAIL CC/PT-5.02.

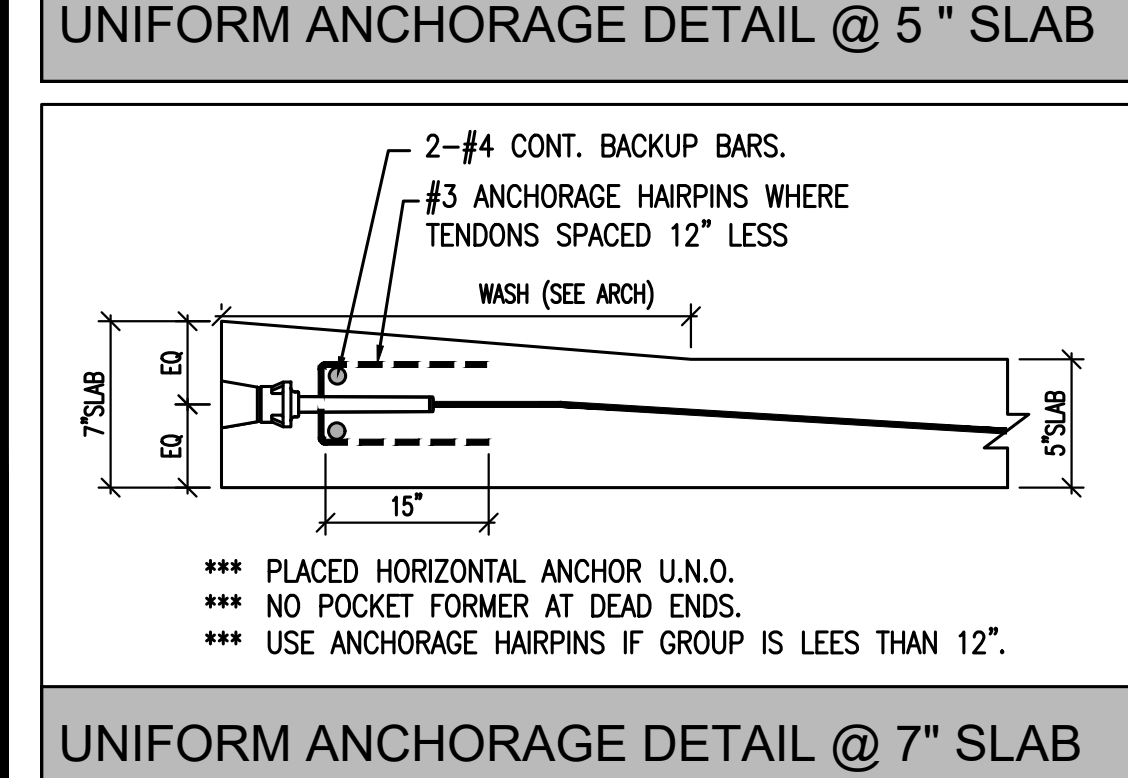
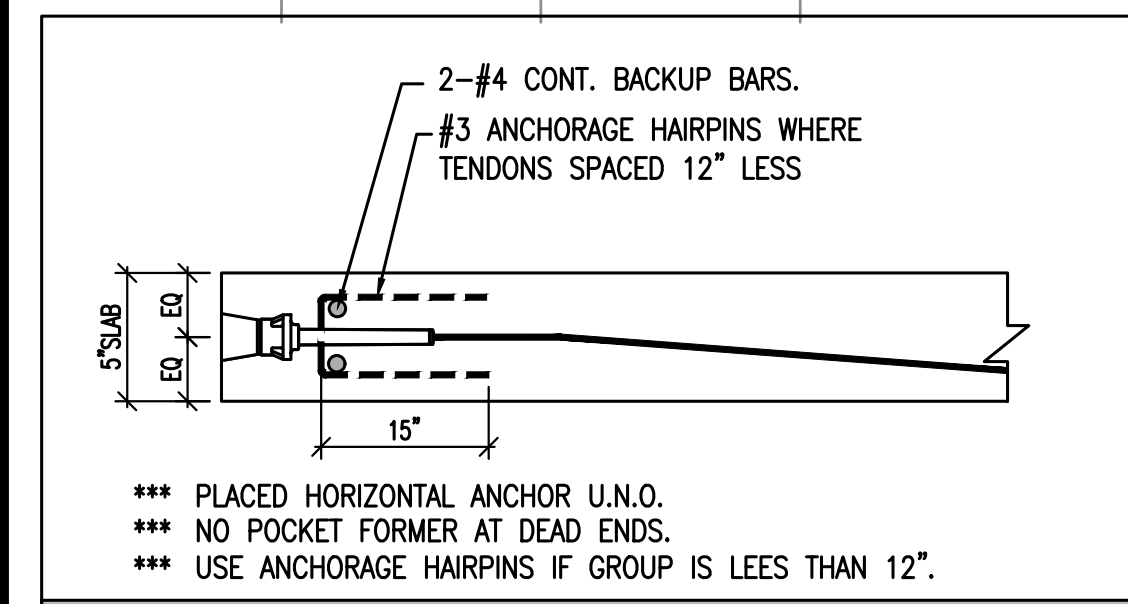
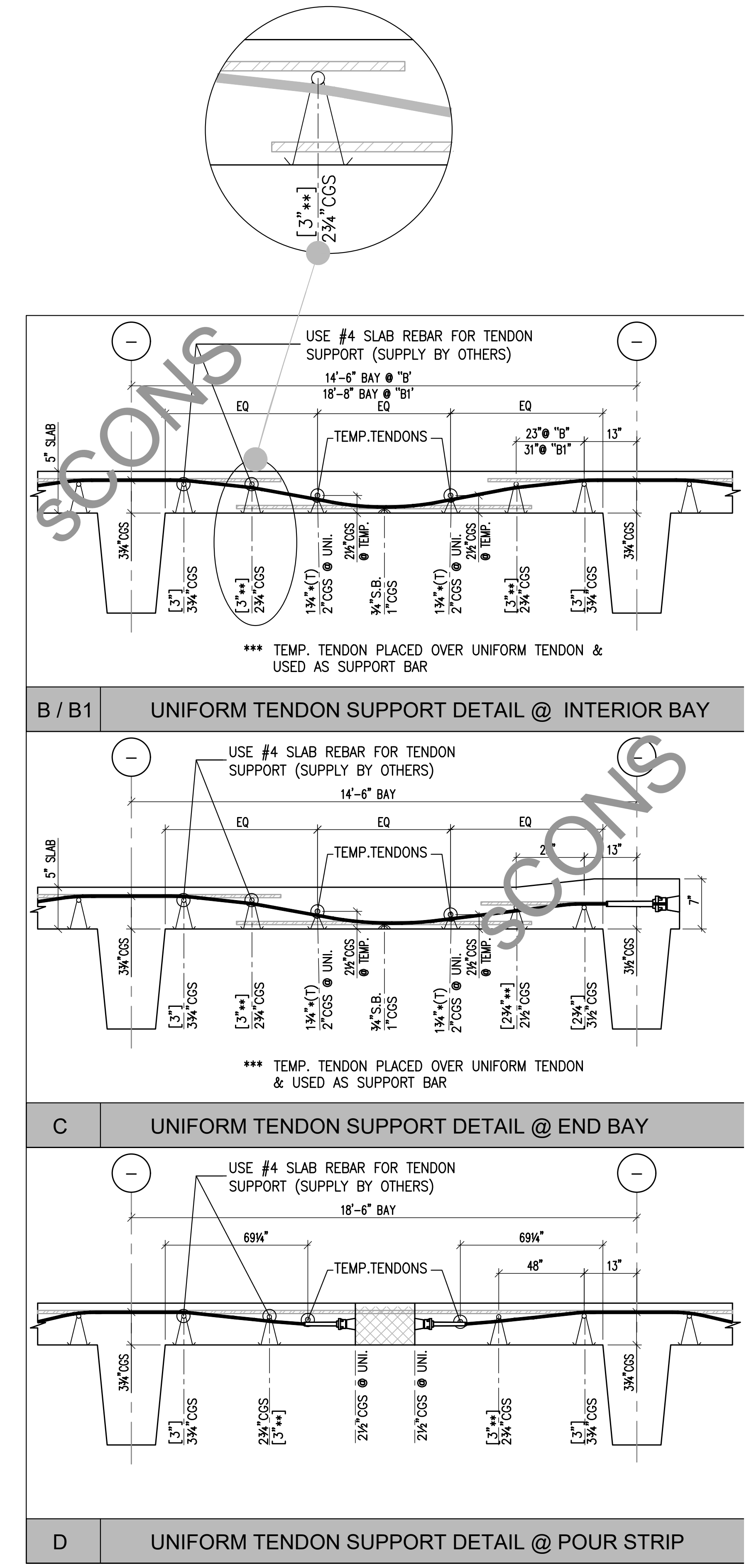
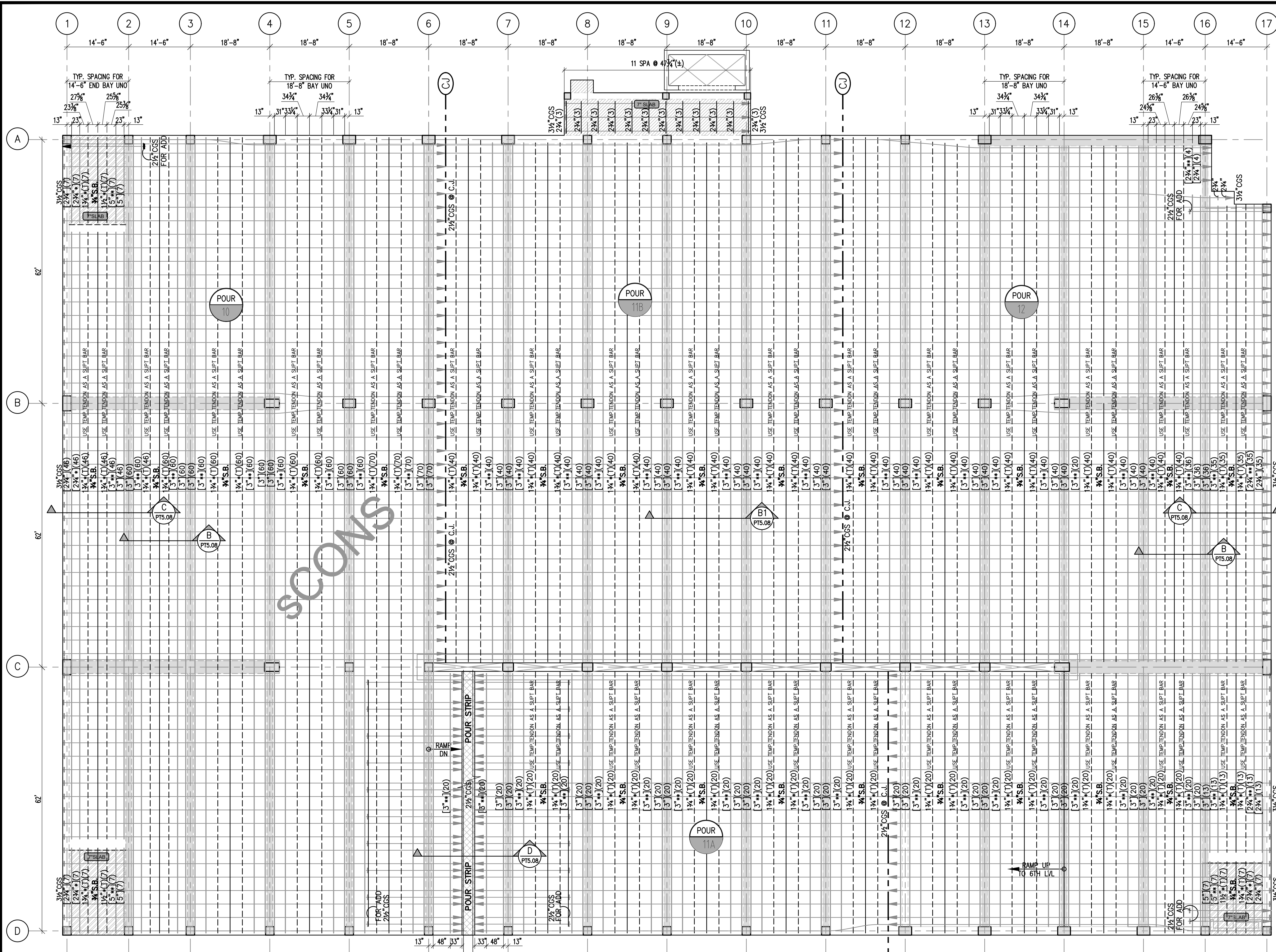
**BEAM TENDON SUPPORT NOTES**

1. REFER TO SHEET PT-1.00 & PT-1.01 FOR ALL GENERAL NOTES, DETAILS AND PROCEDURES.
2. ALL BUNDLES OF TENDONS ARE TO BE TIED SECURELY TO THE SUPPORT BARS IN THE BUNDLING PATTERNS SHOWN.
3. USE BEAM STIRRUPS SPACING FOR BEAM TENDON SUPPORT. SPT. SPACING SHALL NOT EXCEED MORE THAN 48".
4. (\*\*) SMOOTH TENDON PROFILES AT BEAM TENDON FLARING AT ENDS. SEE DETAIL CC FOR MORE INFORMATION

14 BEAM PROFILE FOR PTB @ GRID 14

14A BEAM END DETAIL

14B BEAM END DETAIL



UNIFORM TENDON SUPPORT PLAN  
FIFTH LEVEL  
SCALE: 3/32"=1'-0"

5" TYP. SLAB      7" SLAB

PLEASE NOTE:  
PT-SHOP DRAWINGS ARE DETAILED BASED ON FRAMING PLAN S204 & S205 DATED 05/08/2024 DELTA 1.

**SUPPORT LEGEND**

- USE #4 SLAB REBAR FOR TENDON SUPPORT (SUPPLY BY OTHERS)
- #4 SUPPORT BARS FOR TENDON SUPPORT (SUPPLY BY PT VENDOR)
- - - TEMP. TENDONS USE AS SUPPORT BAR.

- SUPPORT NOTES**
- REFER TO SHEET PT-1.00 & PT-1.01 FOR ALL GENERAL NOTES, DETAILS AND PROCEDURES.
  - ALL BUNDLES OF TENDONS ARE TO BE TIED SECURELY TO THE SUPPORT BARS IN THE BUNDLING PATTERNS SHOWN.
  - ALL ANCHORAGES ARE AT MID-DEPTH OF THE SLAB U.N.O.
  - 5/4\*(15)** USE 5/4" CHAIRS PLACED UNDER #4 SUPPORT BAR & TENDON. (15) INDICATES QUANTITY OF CHAIRS REQUIRED. IF CHAIR QUANTITIES NOT SHOWN 2 CHAIRS ARE REQUIRED.
  - 3/4\*** 1" CHAIR PLACED DIRECTLY UNDER TENDONS TO CENTER OF TENDONS. PLACE REBAR SUPPORT BAR ON TOP OF TENDONS.
  - 5"CGS** DENOTES "CENTER OF STRANDS" WHICH ARE 5" FROM BOTTOM OF SLAB TO CENTER OF TENDONS AND ANCHORAGES.
  - SPACE ALL SUPPORT BARS AT TYPICAL SPACING SHOWN THIS SHEET. AT BAYS NOT DIMENSIONED, USE EQUAL SPACING NOT TO EXCEED 48" U.N.O.
  - TEMPERATURE TENDONS DIRECTLY PLACED ON UNIFORM TENDON U.N.O. SEE DETAILS B,C,D/PT-5.08 FOR MORE INFORMATION

